

Product datasheet for **SM1708F**

EMA (MUC1) Mouse Monoclonal Antibody [Clone ID: C595]

Product data:

Product Type:	Primary Antibodies
Clone Name:	C595
Applications:	FC, IF
Recommended Dilution:	Flow Cytometry: Use 10 µl of neat-1/10 diluted antibody to label 10e6 cells in 100 µl. Immunofluorescence.
Reactivity:	Human
Host:	Mouse
Isotype:	IgG3
Clonality:	Monoclonal
Immunogen:	Urinary MUC-1 mucin. Spleen cells from immunised Balb/c mice were fused with cells of a mouse myeloma cell line.
Specificity:	This antibody recognises CD227, the breast cancer associated mucin encoded by the Muc-1 gene. In normal tissues expression is restricted to specialised glandular epithelial cells. Clone C595 recognises the peptide epitope ARG-PRO-ALA-PRO within the protein core of the Mucin.
Formulation:	PBS, pH7.4 containing 0.09% Sodium Azide as preservative and 1% BSA as stabilizer. Label: FITC State: Liquid purified IgG fraction. Label: Fluorescein Isothiocyanate Isomer 1
Concentration:	lot specific
Purification:	Affinity Chromatography on Protein G
Conjugation:	FITC
Storage:	Store the antibody undiluted at 2-8°C for one month or (in aliquots) at -20°C for longer. Avoid repeated freezing and thawing. This product is photosensitive and should be protected from light.
Stability:	Shelf life: one year from despatch.
Gene Name:	mucin 1, cell surface associated



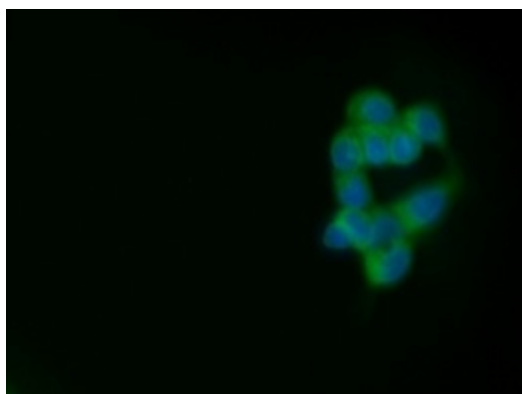
[View online »](#)

Database Link: [Entrez Gene 4582 Human P15941](#)

Background: MUC1 is a large cell surface mucin glycoprotein expressed by most glandular and ductal epithelial cells and some hematopoietic cell lineages. It is expressed on most secretory epithelium, including mammary gland and some hematopoietic cells. It is expressed abundantly in lactating mammary glands and overexpressed abundantly in >90% breast carcinomas and metastases. Transgenic MUC1 has been shown to associate with all four cebb receptors and localize with erbB1 (EGFR) in lactating glands. The MUC1 gene contains seven exons and produces several different alternatively spliced variants. The major expressed form of MUC1 uses all seven exons and is a type 1 transmembrane protein with a large extracellular tandem repeat domain. The tandem repeat domain is highly O glycosylated and alterations in glycosylation have been shown in epithelial cancer cells.

Synonyms: MUC-1, PEMT, Episialin, EMA, H23AG, PUM, DF3, CA 15-3

Product images:



Immunofluorescence staining of MCF-7 cells with Mouse anti Human CD227:FITC (green), nuclei are counterstained with DAPI (blue)