

Product datasheet for **SM1698P**

IL2 Rat Monoclonal Antibody [Clone ID: JES6-1A12]

Product data:

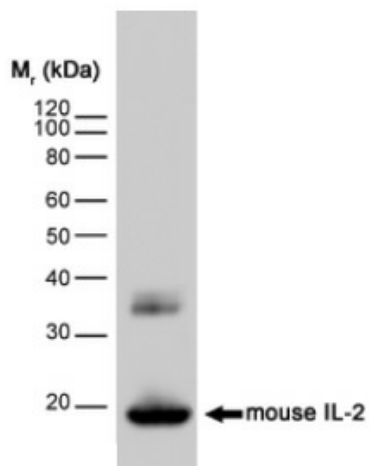
Product Type:	Primary Antibodies
Clone Name:	JES6-1A12
Applications:	ELISA, IP, WB
Recommended Dilution:	ELISA: 1µg/ml - 4µg/ml. Immunoprecipitation. Western Blot: 1µg/ml - 5µg/ml.
Reactivity:	Mouse
Host:	Rat
Isotype:	IgG2a
Clonality:	Monoclonal
Immunogen:	E. coli expressed recombinant mouse IL-2.
Specificity:	This antibody is specific for Interleukin-2 (IL-2). This antibody recognises both natural and recombinant mouse IL-2. Clone JES6-1A12 is reported to function as a neutralizing antibody. We recommends the use of SM1698A for this purpose.
Formulation:	PBS, pH7.4 containing 0.09% Sodium Azide State: Purified State: Liquid purified IgG
Concentration:	lot specific
Purification:	Affinity chromatography
Conjugation:	Unconjugated
Storage:	Store the antibody undiluted at 2-8°C for one month or (in aliquots) at -20°C for longer. Avoid repeated freezing and thawing.
Stability:	Shelf life: one year from despatch.
Gene Name:	interleukin 2
Database Link:	Entrez Gene 16183 Mouse P04351
Background:	Murine IL-2 is a potent lymphoid cell growth factor which primarily acts on T lymphocytes.



[View online »](#)

Synonyms: IL-2, TCGF

Product images:



Western blot analysis of mouse IL-2 recombinant protein probed with RAT ANTI MOUSE INTERLEUKIN-2 followed by F (ab')₂ RABBIT ANTI RAT IgG:HRP.