

Product datasheet for **SM1693PS**

6xHistidine Epitope Tag (HHHHHH) Mouse Monoclonal Antibody [Clone ID: AD1.1.10]

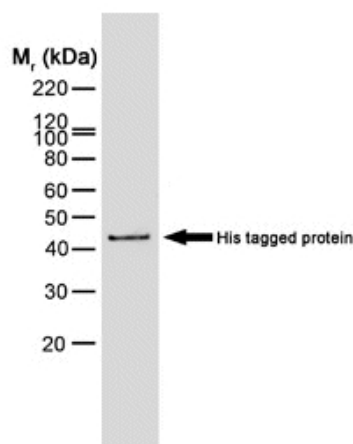
Product data:

Product Type:	Primary Antibodies
Clone Name:	AD1.1.10
Applications:	ELISA, IHC, IP, WB
Recommended Dilution:	ELISA. Immunoprecipitation. Immunohistology on Frozen Sections. Western blot (1/500-1/1000): This antibody is routinely tested on Histidine tagged recombinant protein.
Host:	Mouse
Isotype:	IgG1
Clonality:	Monoclonal
Immunogen:	PAX6 transcription factor linked to Histidine tag. Spleen cells from immunised Balb/c mice were fused with cells of the mouse NS1 myeloma cell line.
Specificity:	This antibody recognises proteins containing the motif H-H-H-H-H-H and is therefore of value in detecting proteins containing histidine tags. The antibody may be used to track the purification of proteins expressed in bacteria, yeast or insect cells. It reacts against all His tagged proteins so far tested. In Western blotting of bacterial extracts the antibody has been shown not to cross-react with any endogenous products, although some cross-reactivity may be seen with extracts of insect or mammalian cells. We recommend the use of SM1693P for this application.
Formulation:	PBS, pH 7.4 State: Purified State: Liquid purified IgG fraction Preservative: 0.09% Sodium Azide
Concentration:	lot specific
Purification:	Affinity Chromatography on Protein G
Conjugation:	Unconjugated



[View online »](#)

Storage:	Store undiluted at 2-8°C for one month or (in aliquots) at -20°C for longer. Avoid repeated freezing and thawing.
Stability:	Shelf life: one year from despatch.
Background:	The H-H-H-H-H-H motif is used as a tag on many recombinant proteins to facilitate purification. The antibody recognizes the His-tag fused to the amino- or carboxy- termini of targeted proteins in transfected or transformed cells.
Synonyms:	6xHis-Tag, HHHHHH Tag, HIS6 Tag, His Tag

Product images:

Western blot of HIS-tagged protein probed with Mouse anti Histidine tag ([SM1693P]/PX) visualised with Rabbit anti Mouse IgG -HRP conjugated ([SP1012HRP]).