

## Product datasheet for **SM1693P**

### 6xHistidine Epitope Tag (HHHHHH) Mouse Monoclonal Antibody [Clone ID: AD1.1.10]

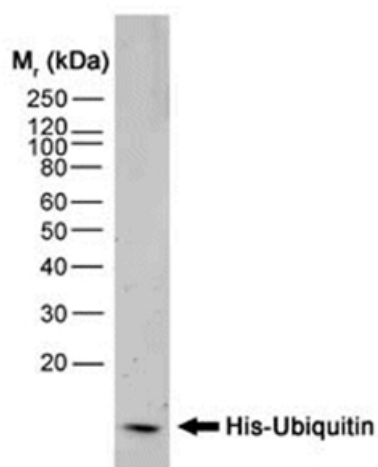
#### Product data:

Product Type:	Primary Antibodies
Clone Name:	AD1.1.10
Applications:	ELISA, IHC, IP, WB
Recommended Dilution:	<b>ELISA</b> <b>Immunoprecipitation</b> <b>Immunohistology on Frozen Sections.</b> <b>Western blot:</b> 1/500-1/1000. This antibody is routinely tested on Histidine tagged recombinant protein.
Host:	Mouse
Isotype:	IgG1
Clonality:	Monoclonal
Immunogen:	PAX6 transcription factor linked to histidine tag.
Specificity:	This antibody recognises proteins containing the motif H-H-H-H-H-H and is therefore of value in detecting proteins containing histidine tags. The antibody may be used to track the purification of proteins expressed in bacteria, Yeast or insect cells. It reacts against all His tagged proteins so far tested. In Western blotting of bacterial extracts the antibody has been shown not to cross-react with any endogenous products, although some cross-reactivity may be seen with extracts of insect or Mammalian cells.
Formulation:	PBS containing 0.09% Sodium Azide State: Purified State: Liquid purified IgG fraction
Concentration:	lot specific
Purification:	Affinity Chromatography on Protein G
Conjugation:	Unconjugated
Storage:	Store the antibody undiluted at 2-8°C for one month or (in aliquots) at -20°C for longer. Avoid repeated freezing and thawing.
Stability:	Shelf life: one year from despatch.  
Background:	The H-H-H-H-H-H motif is used as a tag on many recombinant proteins to facilitate purification.



[View online »](#)

## Product images:



His-Ubiquitin recombinant protein probed with  
Mouse anti Histidine Tag antibody Cat.-No  
SM1693P