

Product datasheet for **SM1693B**

6xHistidine Epitope Tag (HHHHHH) Mouse Monoclonal Antibody [Clone ID: AD1.1.10]

Product data:

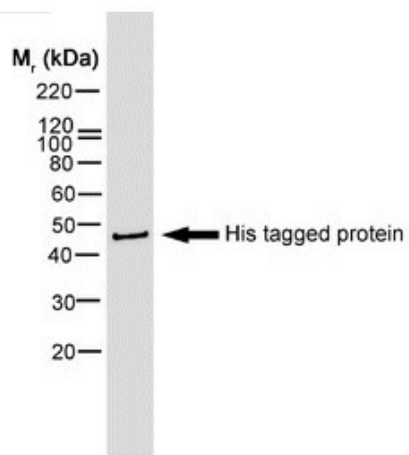
Product Type:	Primary Antibodies
Clone Name:	AD1.1.10
Applications:	ELISA, IHC, IP, WB
Recommended Dilution:	ELISA: 1/1000. Western blot: 1/1000. Immunoprecipitation. Immunohistochemistry on Frozen Sections.
Host:	Mouse
Isotype:	IgG1
Clonality:	Monoclonal
Immunogen:	PAX6 transcription factor linked to <i>Histidine tag</i>
Specificity:	This antibody recognizes proteins containing the motif H-H-H-H-H-H and is therefore of value in detecting proteins containing <i>Histidine tags</i> . The antibody may be used to track the purification of proteins expressed in bacteria, yeast or insect cells. It reacts against all His tagged proteins so far tested. In Western blotting of bacterial extracts the antibody has been shown not to cross-react with any endogenous products, although some cross-reactivity may be seen with extracts of insect or mammalian cells. This antibody is routinely tested in Western blotting on Histidine tagged recombinant proteins and reacts against all Histidine-tagged proteins so far tested.
Formulation:	PBS Label: Biotin State: Liquid purified IgG fraction from tissue culture supernatant Preservative: 0.09% Sodium Azide
Concentration:	lot specific
Purification:	Affinity Chromatography on Protein G
Conjugation:	Biotin
Storage:	Store undiluted at 2-8°C for one month or (in aliquots) at -20°C for longer. Avoid repeated freezing and thawing.



[View online »](#)

Stability: Shelf life: one year from despatch.

Product images:



Western blot of HIS tagged protein probed with mouse anti Histidine Tag - Biotin (SM1693B) and visualised with Streptavidin - HRP