

Product datasheet for **SM1677R**

TLR4 Mouse Monoclonal Antibody [Clone ID: HTA125]

Product data:

Product Type:	Primary Antibodies
Clone Name:	HTA125
Applications:	FC
Recommended Dilution:	Flow Cytometry: Use 10 µl of neat antibody to label 10 ⁶ cells or 100 µl whole blood.
Reactivity:	Canine, Guinea Pig, Human, Monkey, Porcine
Host:	Mouse
Isotype:	IgG2a
Clonality:	Monoclonal
Immunogen:	Ba/F3 cell line expressing TLR4 (CD284). Spleen cells from immunised Balb/c mice were fused with cells of the mouse SP2/0 myeloma cell line.
Specificity:	This antibody recognises the Toll like receptor 4 (TLR4) cell surface antigen. This antibody has been demonstrated to block activation of monocytes with LPS. We recommend the use of SM1677LE for this purpose.
Formulation:	PBS Label: PE State: Lyophilized purified IgG fraction from Tissue Culture Supernatant Stabilizer: 1% BSA and 5% Sucrose Preservative: 0.09% Sodium Azide Label: R. Phycoerythrin (RPE)
Reconstitution Method:	Restore with 1.0 ml distilled water.
Purification:	Affinity Chromatography on Protein G
Conjugation:	PE
Storage:	Prior to and following reconstitution store the antibody at 2-8°C. DO NOT FREEZE! This product is photosensitive and should be protected from light.
Stability:	Shelf life: one year from despatch.
Gene Name:	toll like receptor 4



[View online »](#)

Database Link: [Entrez Gene 574360 Monkey](#)[Entrez Gene 7099 Human](#)
[O00206](#)

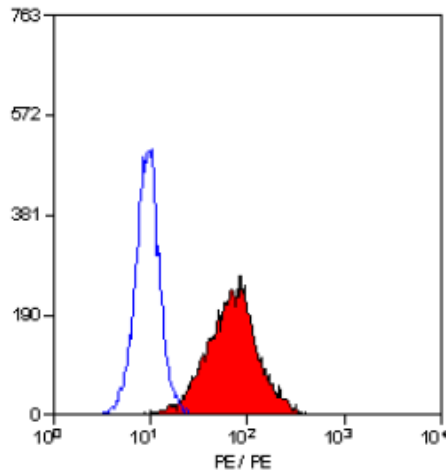
Background: TLR4, also known as CD284, has been demonstrated to act as a receptor for LPS on human monocytes and macrophages. TLR4 signalling of LPS stimulation requires the presence of the MD-2 molecule. TLR4 is weakly expressed by resting cells, but is upregulated following stimulation with LPS.

Synonyms: Toll-like receptor 4

Protein Families: Druggable Genome, Transmembrane

Protein Pathways: Pathogenic Escherichia coli infection, Toll-like receptor signaling pathway

Product images:



Staining of U937 cells with RPE conjugated Mouse Anti Human CD284 Antibody PE (Cat.-No SM1677R).