

Product datasheet for **SM1677FT**

TLR4 Mouse Monoclonal Antibody [Clone ID: HTA125]

Product data:

Product Type:	Primary Antibodies
Clone Name:	HTA125
Applications:	FC
Recommended Dilution:	Flow Cytometry: Use 10 µl of neat antibody to label 10 ⁶ cells or 100 µl whole blood.
Reactivity:	Canine, Guinea Pig, Human, Monkey, Porcine
Host:	Mouse
Isotype:	IgG2a
Clonality:	Monoclonal
Immunogen:	Ba/F3 cell line expressing TLR4 (CD284). Spleen cells from immunised Balb/c mice were fused with cells of the mouse SP2/0 myeloma cell line.
Specificity:	This antibody recognises the human Toll like receptor 4 (TLR4) cell surface antigen. This antibody has been demonstrated to block activation of monocytes with LPS. We recommend the use of SM1677LE for this purpose.
Formulation:	PBS Label: FITC State: Liquid purified IgG fraction Stabilizer: 1% BSA Preservative: 0.09% Sodium Azide Label: Fluorescein Isothiocyanate Isomer 1
Concentration:	lot specific
Purification:	Affinity Chromatography on Protein G
Conjugation:	FITC
Storage:	Store undiluted at 2-8°C for one month or (in aliquots) at -20°C for longer. This product is photosensitive and should be protected from light. Avoid repeated freezing and thawing.
Stability:	Shelf life: one year from despatch.
Gene Name:	toll like receptor 4



[View online »](#)

Database Link: [Entrez Gene 574360 Monkey](#)[Entrez Gene 7099 Human](#)
[O00206](#)

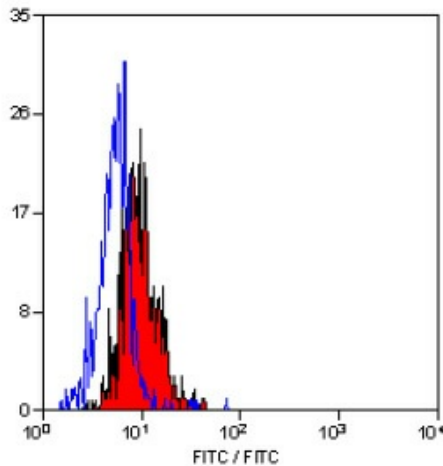
Background: TLR4, also known as CD284, has been demonstrated to act as a receptor for LPS on human monocytes and macrophages. TLR4 signalling of LPS stimulation requires the presence of the MD-2 molecule. TLR4 is weakly expressed by resting cells, but is upregulated following stimulation with LPS.

Synonyms: Toll-like receptor 4

Protein Families: Druggable Genome, Transmembrane

Protein Pathways: Pathogenic Escherichia coli infection, Toll-like receptor signaling pathway

Product images:



Staining of Human peripheral blood monocytes with Mouse Anti Human CD284 Antibody -FITC.