

Product datasheet for **SM1676F**

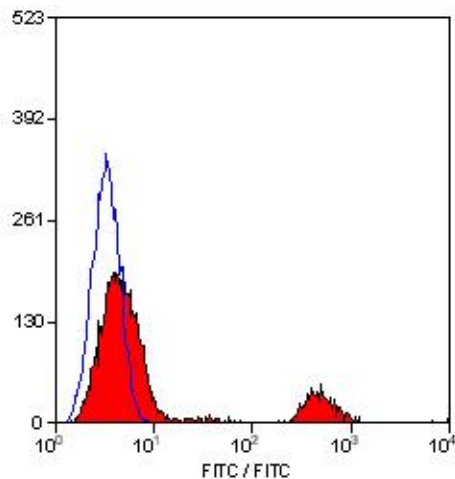
CD20 (MS4A1) Mouse Monoclonal Antibody [Clone ID: 2H7]

Product data:

Product Type:	Primary Antibodies
Clone Name:	2H7
Applications:	FC
Recommended Dilution:	Flow Cytometry: Use 10 µl of neat-1/10 diluted antibody to label 10e6 cells or 100 µl whole blood.
Reactivity:	Human, Monkey
Host:	Mouse
Isotype:	IgG2b
Clonality:	Monoclonal
Specificity:	This antibody recognises the human CD20 cell surface antigen.
Formulation:	PBS, pH 7.4 with 0.09% sodium azide as preservative and 1% BSA as stabilizer Label: FITC State: Liuid purified IgG fraction. Label: Flourescein isothiocyanate isomer 1
Concentration:	lot specific
Purification:	Affinity Chromatography on Protein G.
Conjugation:	FITC
Storage:	Store the antibody undiluted at 2-8°C for one month or (in aliquots) at -20°C for longer. This product is photosensitive and should be protected from light. Avoid repeated freezing and thawing.
Stability:	Shelf life: one year from despatch.
Gene Name:	membrane spanning 4-domains A1
Database Link:	Entrez Gene 931 Human P11836
Background:	CD20 is a 33-37kD phosphoprotein. CD20 is expressed by B lymphocytes and by a small subset of normal circulating T lymphocytes.
Synonyms:	MS4A1, Leu-16, Bp35, B-cell marker



[View online »](#)

Product images:

Staining of human peripheral blood lymphocytes with Mouse anti Human CD20-FITC antibody (SM1676F/FT).