

## Product datasheet for **SM1666P**

### **C5R1 (C5AR1) Mouse Monoclonal Antibody [Clone ID: P12/1]**

#### **Product data:**

Product Type:	Primary Antibodies
Clone Name:	P12/1
Applications:	FC, IHC, WB
Recommended Dilution:	<b>Western blot.</b> <b>Immunohistochemistry on Frozen Sections.</b> <b>Immunohistochemistry on Paraffin Sections.</b> <b>Flow Cytometry:</b> Use 10 µl of 1/50-1/100 diluted antibody to label 5 x 10e5 cells in 100 µl.
Reactivity:	Human
Host:	Mouse
Isotype:	IgG2a
Clonality:	Monoclonal
Immunogen:	C5aR - peptide: Met1 - Asn31. Spleen cells from immunised BALB/c mice were fused with cells of the X63-Ag8 myeloma cell line.
Specificity:	This antibody recognises the C5a receptor (C5aR) CD88. Clone P12/1 was raised against a synthetic peptide comprising the N-terminal extracellular domain of the C5aR (met1-Asn31). Clone P12/1 does not inhibit the binding of C5a to its receptor. We recommend the use of SM1182A for functional studies.
Formulation:	PBS containing 0.09% Sodium Azide State: Purified State: Liquid purified IgG fraction
Concentration:	lot specific
Purification:	Affinity Chromatography on Protein G
Conjugation:	Unconjugated
Storage:	Store the antibody undiluted at 2-8°C for one month or (in aliquots) at -20°C for longer. Avoid repeated freezing and thawing.
Stability:	Shelf life: one year from despatch.



[View online »](#)

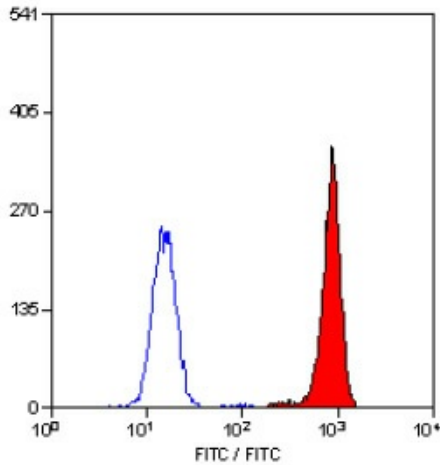
**Gene Name:** complement component 5a receptor 1

**Database Link:** [Entrez Gene 728 Human P21730](#)

**Background:** C5a Anaphylatoxin Receptor mediates the effects of one of the most potent chemotactic agents known, in a wide variety of inflammatory cell types. C5a receptor 1 has been implicated in asthma. CD88 is predominantly expressed on cells of the myeloid lineage.

**Synonyms:** C5a-R, C5aR, C5AR1, Complement Component 5a Receptor 1

### Product images:



Staining of Human peripheral blood granulocytes with Mouse Anti Human CD88 antibody.