

Product datasheet for **SM1666F**

C5R1 (C5AR1) Mouse Monoclonal Antibody [Clone ID: P12/1]

Product data:

Product Type:	Primary Antibodies
Clone Name:	P12/1
Applications:	FC
Recommended Dilution:	Flow Cytometry: Use 10 µl of 1/10 diluted antibody solution to label 10 ⁶ cells in 100 µl.
Reactivity:	Human
Host:	Mouse
Isotype:	IgG2a
Clonality:	Monoclonal
Immunogen:	C5aR - peptide: Met1 - Asn31
Specificity:	The antibody recognizes the N-terminal extracellular segment of the Human CD88 cell surface antigen (C5aR). Clone P12/1 was raised against a synthetic peptide comprising the N-terminal extracellular domain of the C5aR (met1-Asn31). This CD88 antibody, clone P12/1 does not inhibit the binding of C5a to its receptor.
Formulation:	PBS Label: FITC State: Liquid purified IgG fraction Stabilizer: 1% BSA Preservative: 0.09% Sodium Azide Label: Fluorescein Isothiocyanate Isomer 1
Concentration:	lot specific
Purification:	Ion Exchange Chromatography
Conjugation:	FITC
Storage:	Store undiluted at 2-8°C for one month or (in aliquots) at -20°C for longer. This product is photosensitive and should be protected from light. Avoid repeated freezing and thawing.
Stability:	Shelf life: one year from despatch.
Gene Name:	complement component 5a receptor 1



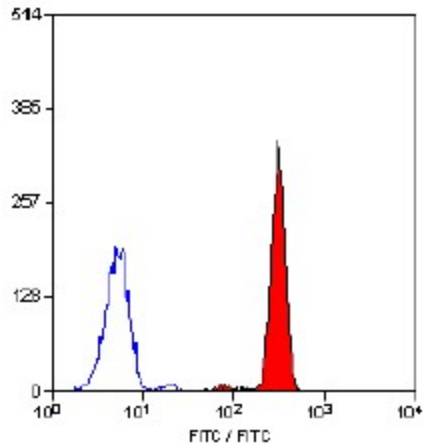
[View online »](#)

Database Link: [Entrez Gene 728 Human P21730](#)

Background: CD88 is expressed by peripheral blood granulocytes and monocytes. Binding of C5a to CD88 leads to cellular activation, including chemotaxis.

Synonyms: C5a-R, C5aR, C5AR1, Complement Component 5a Receptor 1

Product images:



Staining of human peripheral blood granulocytes with Mouse anti Human CD88-FITC