

Product datasheet for **SM1601PS**

CD97 (ADGRE5) Mouse Monoclonal Antibody [Clone ID: MEM-180]

Product data:

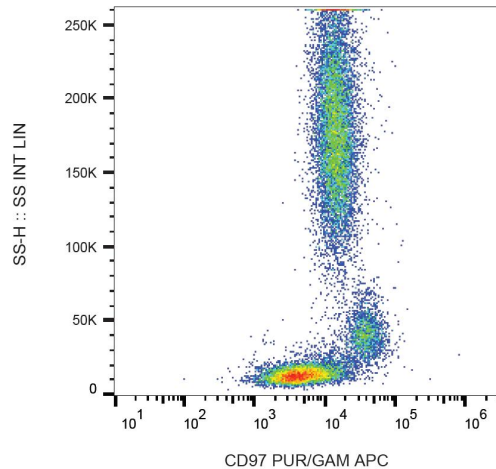
| | |
|-----------------------|--|
| Product Type: | Primary Antibodies |
| Clone Name: | MEM-180 |
| Applications: | FC, IP |
| Recommended Dilution: | Flow cytometry: 5 µg/ml. Immunoprecipitation. |
| Reactivity: | Human |
| Host: | Mouse |
| Isotype: | IgG1 |
| Clonality: | Monoclonal |
| Immunogen: | PHA-activated blood cells |
| Specificity: | The antibody recognizes an unique epitope on CD97, a 75-85 kDa surface glycoprotein of G-protein-coupled receptor family, expressed on activated B and T lymphocytes, monocytes/macrophages, dendritic cells and granulocytes. |
| Formulation: | Phosphate buffered saline (PBS) with 15 mM sodium azide, approx. pH 7.4 State: Purified State: Liquid Ig fraction |
| Concentration: | lot specific |
| Purification: | Protein-A affinity chromatography; purity: > 95% (by SDS-PAGE) |
| Conjugation: | Unconjugated |
| Storage: | Store the antibody at 2-8°C for one month or at -20°C for longer. Avoid repeated freezing and thawing. |
| Stability: | Shelf life: one year from despatch. |
| Gene Name: | adhesion G protein-coupled receptor E5 |
| Database Link: | Entrez Gene 976 Human P48960 |



[View online »](#)

Background:

CD97 is a G-protein-coupled seven-span transmembrane adhesive receptor that is constitutively expressed on granulocytes and monocytes and rapidly upregulated on T and B cells upon activation. CD97 is produced in alternatively spliced forms and its cellular ligand is CD55 (DAF), which protects various cell types from complement-mediated damage. Interaction of CD97 on leukocytes and CD55 on vessel cells probably facilitate leukocyte activation and migration into the tissues, similarly, CD97 seems to play a role in tumour migration and invasiveness. CD97 is involved in T cell regulation and peripheral granulocyte homeostasis.

Product images:

Surface staining of human peripheral blood with anti-CD97 (MEM-180) purified, GAM-APC.