

## Product datasheet for **SM1594P**

### HLAG (HLA-G) Mouse Monoclonal Antibody [Clone ID: MEM-G/4]

#### Product data:

Product Type:	Primary Antibodies
Clone Name:	MEM-G/4
Applications:	WB
Recommended Dilution:	Western blotting: Recommended dilution: 1-2 µg/ml. (MWs: HLA-G1 ~45 kDa, HLA-G2 ~45 kDa; HLA-G5 ~28 kDa).
Reactivity:	Human
Host:	Mouse
Isotype:	IgG1
Clonality:	Monoclonal
Immunogen:	Recombinant human HLA-G denaturated heavy chain
Specificity:	The antibody reacted with denaturated HLA-G heavy chain. The recognized epitope is present only on HLA-G1, -G2 and -G5 molecules. HLA-G1 and -G2 are membrane bound proteins, HLA-G5 is a soluble protein.
Formulation:	Phosphate buffered saline pH 7.4 with 15 mM sodium azide as preservative State: Purified State: Liquid
Concentration:	lot specific
Purification:	Protein A affinity purified immunoglobulin fraction (> 95% by SDS-PAGE)
Conjugation:	Unconjugated
Storage:	Store at 2-8°C for 6 months. For long-term storage aliquot and store at -20°C. Avoid freeze/thaw cycles.
Stability:	Shelf life: One year from despatch.
Gene Name:	major histocompatibility complex, class I, G
Database Link:	<a href="#">Entrez Gene 3135 Human P17693</a>



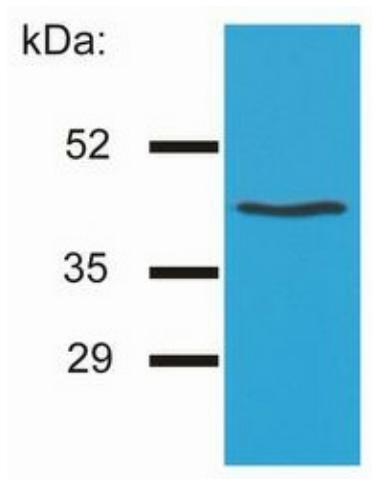
[View online »](#)

**Background:**

HLA G belongs to the HLA class I heavy chain paralogues. It is a heterodimer consisting of a heavy chain (with a1, a2, a3 domains) and a light chain (beta 2 microglobulin). Alternate splicing provides both soluble and membrane bound forms of HLA G, with two soluble isoforms and four membrane bound isoforms. HLA G may be part of the fetal protection system and is expressed on fetal derived placental cells.

**Synonyms:**

HLA-6.0, HLAG, MHC class I antigen G

**Product images:**

Western blotting analysis of HLA-G by the antibody MEM-G/4 on HLA-G1 transfectants (LCL-HLA-G1).