

## Product datasheet for **SM1593P**

### HLAG (HLA-G) Mouse Monoclonal Antibody [Clone ID: MEM-G/11]

#### Product data:

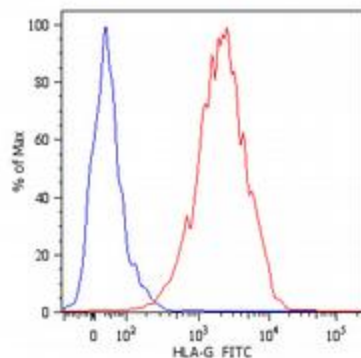
Product Type:	Primary Antibodies
Clone Name:	MEM-G/11
Applications:	ELISA, FC, IP
Recommended Dilution:	<b>Immunoprecipitation.</b> <b>Flow Cytometry:</b> 2 µg/ml (the antibody clone MEM-G/11 does not cross-block standard clone MEM-G/9 antibody). <b>ELISA.</b>
Reactivity:	Human
Host:	Mouse
Isotype:	IgG1
Clonality:	Monoclonal
Immunogen:	Recombinant human HLA-G refolded with beta2-microglobulin and peptide
Specificity:	The antibody recognizes HLA-G1 antigen.
Formulation:	Phosphate buffered saline (PBS) with 15 mM sodium azide, approx. pH 7.4 State: Purified State: Liquid Ig fraction
Concentration:	lot specific
Purification:	Protein A-affinity chromatography; purity: > 95% (by SDS-PAGE)
Conjugation:	Unconjugated
Storage:	Store undiluted at 2-8°C. <b>DO NOT FREEZE!</b>
Stability:	Shelf life: one year from despatch.
Gene Name:	major histocompatibility complex, class I, G
Database Link:	<a href="#">Entrez Gene 3135 Human P17693</a>
Background:	HLA-G belongs to the MHC Class I molecules (MHC Class Ib; nonclassical) and it is expressed on the surface of trophoblast cells.



[View online »](#)

Synonyms: HLA-6.0, HLAG, MHC class I antigen G

### Product images:



Surface staining of JEG-3 human choriocarcinoma cell line with anti-human HLA-G (MEM-G/11) FITC. Total viable cells were used for analysis.