

Product datasheet for **SM1593F**

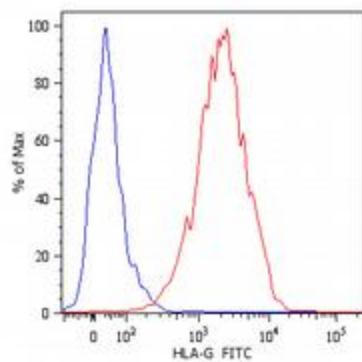
HLAG (HLA-G) Mouse Monoclonal Antibody [Clone ID: MEM-G/11]

Product data:

Product Type:	Primary Antibodies
Clone Name:	MEM-G/11
Applications:	FC
Recommended Dilution:	Flow Cytometry analysis of cells expressing HLA-G molecule on the cell surface. <i>Suggested Working Dilution: 1/500.</i>
Reactivity:	Human
Host:	Mouse
Isotype:	IgG1
Clonality:	Monoclonal
Immunogen:	Recombinant Human HLA-G refolded with beta-2-Microglobulin and peptide.
Specificity:	The antibody recognizes HLA-G1 antigen.
Formulation:	Phosphate buffered saline (PBS) containing 15 mM Sodium Azide, pH~7.4 Label: FITC State: Liquid purified Ig fraction. Label: Conjugated with Fluorescein isothiocyanate under optimum conditions. The reagent is free of unconjugated
Concentration:	lot specific
Conjugation:	FITC
Storage:	Store the antibody at 2-8°C. DO NOT FREEZE. This product is photosensitive and should be protected from light.
Stability:	Shelf life: one year from despatch.
Gene Name:	major histocompatibility complex, class I, G
Database Link:	Entrez Gene 3135 Human P17693
Background:	HLA-G belongs to the MHC Class I molecules (MHC Class Ib; nonclassical) and it is expressed on the surface of trophoblast cells.
Synonyms:	HLA-6.0, HLAG, MHC class I antigen G



[View online »](#)

Product images:

Surface staining of JEG-3 human choriocarcinoma cell line with anti-human HLA-G (MEM-G/11) FITC. Total viable cells were used for analysis.