

Product datasheet for **SM1592R**

HLA-G (HLA-G) Mouse Monoclonal Antibody [Clone ID: MEM-G/9]

Product data:

Product Type:	Primary Antibodies
Clone Name:	MEM-G/9
Applications:	FC
Recommended Dilution:	Flow Cytometry analysis of cells expressing HLA-G molecule on the cell surface. <i>Suggested Working Dilution:</i> 1/100. <i>Positive Control:</i> JEG-3 Human choriocarcinoma cell line.
Reactivity:	Human
Host:	Mouse
Isotype:	IgG1
Clonality:	Monoclonal
Immunogen:	Recombinant human HLA-G refolded with beta2-microglobulin and peptide
Specificity:	The antibody reacts with native form of Human HLA-G1 on the cell surface as well as with soluble HLA-G5 isoform in its beta2-microglobulin associated form. The clone MEM-G/9 is standard reagent thoroughly validated during 3rd International Conference on HLA-G (Paris, 2003).
Formulation:	PBS containing 15 mM Sodium Azide Label: PE State: Liquid purified Ig fraction Label: Conjugated with R-Phycoerythrin under optimum conditions. The conjugate is purified by size-exclusion chromatography.
Concentration:	lot specific
Conjugation:	PE
Storage:	Store the antibody undiluted at 2-8°C. DO NOT FREEZE! This product is photosensitive and should be protected from light.
Stability:	Shelf life: one year from despatch.
Gene Name:	major histocompatibility complex, class I, G



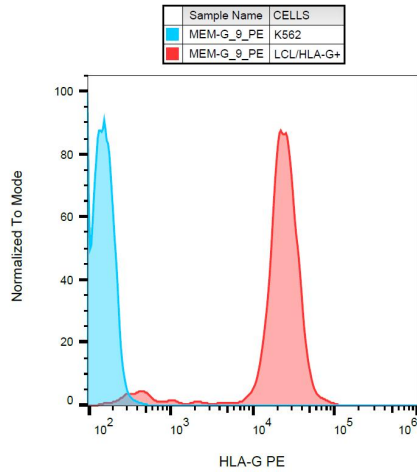
[View online »](#)

Database Link: [Entrez Gene 3135 Human P17693](#)

Background: HLA-G belongs to the MHC Class I molecules (MHC Class Ib; nonclassical) and it is expressed on the surface of trophoblast cells.

Synonyms: HLA-6.0, HLAG, MHC class I antigen G

Product images:



Surface staining of HLA-G1 transfectants (LCL-HLA-G1) using anti-HLA-G (MEM-G/9) PE.