

Product datasheet for **SM1592F**

HLA-G (HLA-G) Mouse Monoclonal Antibody [Clone ID: MEM-G/9]

Product data:

Product Type:	Primary Antibodies
Clone Name:	MEM-G/9
Applications:	FC
Recommended Dilution:	Flow cytometry analysis of cells expressing HLA-G molecule on the cell surface: 1/500 as a starting dilution. <i>Positive control:</i> JEG-3 human choriocarcinoma cell line.
Reactivity:	Human
Host:	Mouse
Isotype:	IgG1
Clonality:	Monoclonal
Immunogen:	Recombinant human HLA-G refolded with beta2-microglobulin and peptide
Specificity:	The antibody MEM-G/9 reacts with native form of human HLA-G1 on the cell surface as well as with soluble HLA-G5 isoform in its beta2-microglobulin associated form.
Formulation:	PBS with 15 mM sodium azide, approx. pH 7.4 Label: FITC State: Liquid purified antibody Label: Conjugated with Fluorescein isothiocyanate (FITC) under optimum conditions. The reagent is free of unconjugated FITC. Absorption emission: 495 nm / 528 nm
Concentration:	lot specific
Conjugation:	FITC
Storage:	Prior to and following reconstitution store the antibody at 2-8°C. DO NOT FREEZE! This product is photosensitive and should be protected from light.
Stability:	Shelf life: one year from despatch.
Gene Name:	major histocompatibility complex, class I, G
Database Link:	Entrez Gene 3135 Human P17693



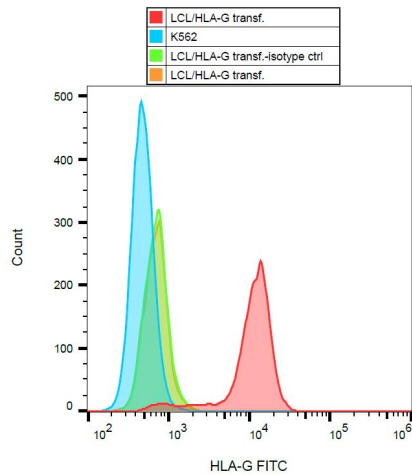
[View online »](#)

Background: HLA-G belongs to the MHC Class I molecules (MHC Class Ib; nonclassical) and it is expressed on the surface of trophoblast cells.

Synonyms: HLA-6.0, HLAG, MHC class I antigen G

Note: The antibody MEM-G/9 is standard reagent thoroughly validated during 3rd International Conference on HLA-G (Paris, 2003).

Product images:



Surface staining of HLA-G1 transfectants (LCL-HLA-G1) using anti-HLA-G (MEM-G/9) FITC.