

Product datasheet for **SM1592B**

HLA-G (HLA-G) Mouse Monoclonal Antibody [Clone ID: MEM-G/9]

Product data:

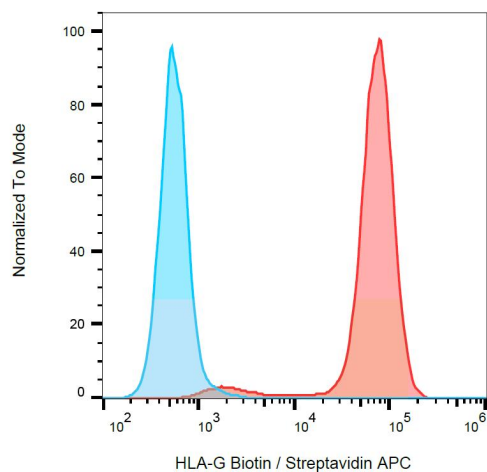
Product Type:	Primary Antibodies
Clone Name:	MEM-G/9
Applications:	FC
Recommended Dilution:	Flow Cytometry analysis of cells expressing HLA-G molecule on the cell surface. Use 1/1000 as a starting point.
Reactivity:	Human
Host:	Mouse
Isotype:	IgG1
Clonality:	Monoclonal
Immunogen:	Recombinant Human HLA-G refolded with beta-2-Microglobulin and peptide.
Specificity:	The antibody MEM-G/9 reacts with native form of human HLA-G1 on the cell surface as well as with soluble HLA-G5 isoform in its beta2-microglobulin associated form. The antibody MEM-G/9 is standard reagent thoroughly validated during 3rd International Conference on HLA-G (Paris, 2003).
Formulation:	Phosphate buffered saline (PBS) with 15 mM Sodium Azide, approx. pH 7.4 Label: Biotin State: Liquid purified Ig fraction Label: Conjugated with Biotin-LC-NHS under optimum conditions. The reagent is free of unconjugated biotin.
Concentration:	lot specific
Conjugation:	Biotin
Storage:	Store the antibody undiluted at 2 - 8 °C. DO NOT FREEZE!
Stability:	Shelf life: one year from despatch.
Gene Name:	major histocompatibility complex, class I, G
Database Link:	Entrez Gene 3135 Human P17693
Background:	HLA-G belongs to the MHC Class I molecules (MHC Class Ib; nonclassical) and it is expressed on the surface of trophoblast cells.



[View online »](#)

Synonyms: HLA-6.0, HLAG, MHC class I antigen G

Product images:



Surface staining of HLA-G1 transfectants (LCL-HLA-G1) using anti-HLA-G (MEM-G/9) biotin, streptavidin/GAM-APC.