

## Product datasheet for **SM1592AS**

### HLA-G (HLA-G) Mouse Monoclonal Antibody [Clone ID: MEM-G/9]

#### Product data:

Product Type:	Primary Antibodies
Clone Name:	MEM-G/9
Applications:	ELISA, FC, IF, IHC, IP
Recommended Dilution:	Flow cytometry: Recommended dilution: 0.3-4 µg/ml; positive control: JEG-3 human choriocarcinoma cell line. Immunocytochemistry: Recommended dilution: 2-5 µg/ml. ELISA: The antibody MEM-G/9 has been tested as the capture antibody in a sandwich ELISA for analysis of human HLA-G in combination with antibody B2M-01 or with antibody W6/32. Coating antibody 10 µg/ml, detection antibody (biotin or peroxidase conjugate) 1 µg/ml. Immunohistochemistry: Recommended dilution: 1-4 µg/ml.
Reactivity:	Human
Host:	Mouse
Isotype:	IgG1
Clonality:	Monoclonal
Immunogen:	Recombinant human HLA-G refolded with beta2-microglobulin and peptide
Specificity:	The antibody reacts with native form of human HLA-G1 on the cell surface as well as with soluble HLA-G5 isoform in its beta2-microglobulin associated form.
Formulation:	Azide free phosphate buffered saline (PBS), approx. pH 7.4; 0.2 µm filter sterilized State: Azide Free State: Liquid Ig fraction
Concentration:	lot specific
Purification:	Purified by protein A; purity: > 95% (by SDS-PAGE)
Conjugation:	Unconjugated
Storage:	Store undiluted at 2-8°C. <b>DO NOT FREEZE!</b>
Stability:	Shelf life: one year from despatch.
Gene Name:	major histocompatibility complex, class I, G



[View online »](#)

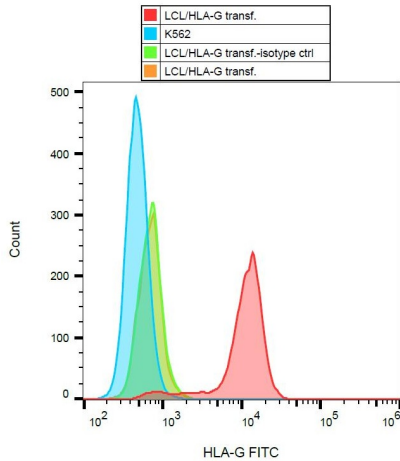
**Database Link:** [Entrez Gene 3135 Human P17693](#)

**Background:** HLA-G belongs to the MHC Class I molecules (MHC Class Ib; nonclassical) and it is expressed on the surface of trophoblast cells.

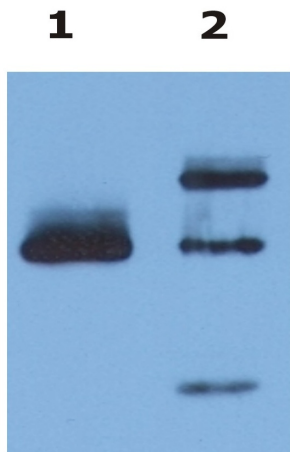
**Synonyms:** HLA-6.0, HLAG, MHC class I antigen G

**Note:** The clone MEM-G/9 is standard reagent thoroughly validated during 3rd International Conference on HLA-G (Paris, 2003).

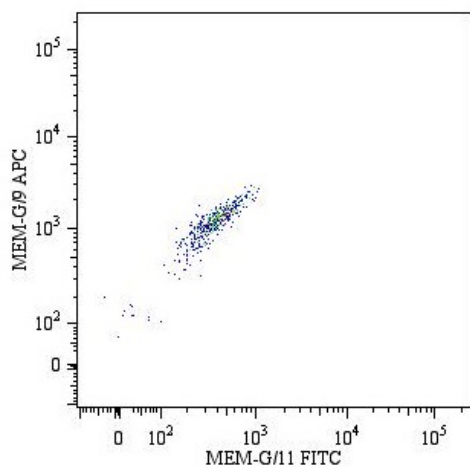
**Product images:**



Surface staining of HLA-G1 transfectants (LCL-HLA-G1) using anti-HLA-G (MEM-G/9) FITC.



Immunoprecipitation of HLA-G from HLA-G1 transfectants (LCL-HLA-G1) by anti-human HLA-G (MEM-G/9) and protein G. HLA-G was detected by anti-human HLA-G (4H84) and goat anti-mouse HRP in cell lysate (Lane 1) and in the immunoprecipitate (Lane 2).



Double surface staining of HLA-G1 transfectants (viable cells gate) using anti-human HLA-G (MEM-G/9) APC and anti-human HLA-G (MEM-G/11) FITC.