

## Product datasheet for **SM1591S**

### HLA-G (HLA-G) Mouse Monoclonal Antibody [Clone ID: MEM-G/1]

#### Product data:

Product Type:	Primary Antibodies
Clone Name:	MEM-G/1
Applications:	IHC, WB
Recommended Dilution:	<b>Western Blotting.</b> Recommended dilution 1-2 µg/ml. <b>Immunohistochemistry on Paraffin Sections:</b> 1/60-1/100 <i>Incubation Time:</i> 1 hour at RT. <i>Positive tissue:</i> Human placenta - extravillous cytotrophoblast. <i>Staining technique:</i> Standard ABC technique. <i>Pretreatment:</i> Heat retrieval in 0.01 M citrate buffer (4x2 min. in microwave oven).
Reactivity:	Human
Host:	Mouse
Isotype:	IgG1
Clonality:	Monoclonal
Immunogen:	Recombinant Human HLA-G denaturated heavy chain
Specificity:	The antibody reacts with denaturated HLA-G heavy chain. HLA-G belongs to the MHC Class I molecules (MHC Class Ib; nonclassical) and it is expressed on the surface of trophoblast cells.
Formulation:	Phosphate buffered saline (PBS), pH~7.4 with 15 mM Sodium Azide State: Purified State: Liquid purified Ig fraction (> 95% pure by SDS-PAGE)
Concentration:	lot specific
Purification:	Affinity Chromatography on Protein-A
Conjugation:	Unconjugated
Storage:	Store undiluted at 2-8°C. Do Not freeze.
Stability:	Shelf life: one year from despatch.
Gene Name:	major histocompatibility complex, class I, G
Database Link:	<a href="#">Entrez Gene 3135 Human P17693</a>



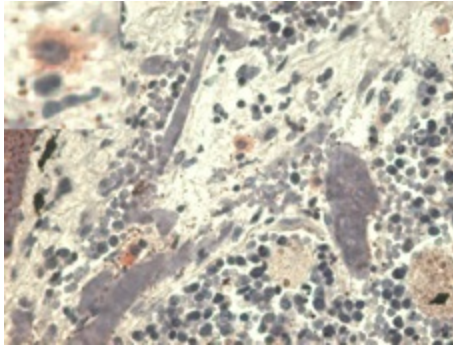
[View online »](#)

**Background:**

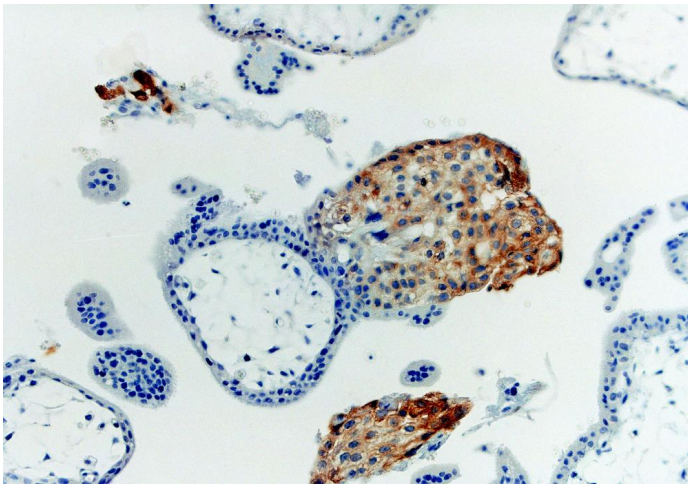
HLA G belongs to the HLA class I heavy chain paralogues. It is a heterodimer consisting of a heavy chain (with a1, a2, a3 domains) and a light chain (beta 2 microglobulin). Alternate splicing provides both soluble and membrane bound forms of HLA G, with two soluble isoforms and four membrane bound isoforms. HLA G may be part of the fetal protection system and is expressed on fetal derived placental cells.

**Synonyms:**

HLA-6.0, HLAG, MHC class I antigen G

**Product images:**

Immunohistochemistry staining with anti-human HLA-G (MEM-G/1) - pulmonary diseases (paraffin-embedded sections). The antibody MEM-G/1 stains infiltrating macrophages in pulmonary diseases. In the top left corner see the detail of macrophage.



Immunohistochemistry staining with anti-human HLA-G (MEM-G/1) of first trimester placenta (paraffin-embedded sections).