

## Product datasheet for **SM1578R**

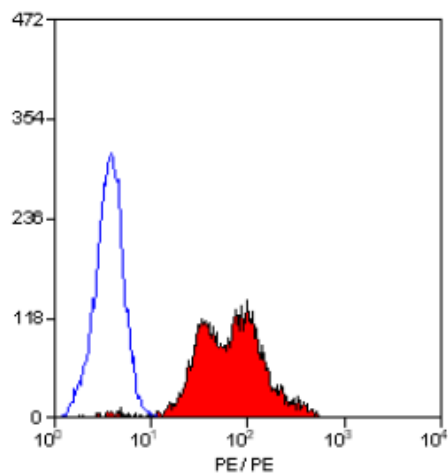
### Integrin beta 1 (ITGB1) Mouse Monoclonal Antibody [Clone ID: 4B7R]

#### Product data:

Product Type:	Primary Antibodies
Clone Name:	4B7R
Applications:	FC
Recommended Dilution:	<b>Flow Cytometry:</b> Use 10 µl of neat-1/2 diluted CD29 antibody to label 10 <sup>6</sup> cells in 100 µl
Reactivity:	Human
Host:	Mouse
Isotype:	IgG1
Clonality:	Monoclonal
Immunogen:	Ocular melanoma cell line V+B2.
Specificity:	This antibody recognises the beta 1 subunit of integrin (CD29)
Formulation:	PBS, pH 7.4 containing 0.09% Sodium Azide as preservative and 1% BSA as stabilizer Label: PE State: Lyophilized purified IgG fraction Label: R. Phycoerythrin (RPE)
Reconstitution Method:	Restore with 1.0 ml distilled water
Purification:	Affinity Chromatography on Protein G
Conjugation:	PE
Storage:	Prior to and following reconstitution store the antibody undiluted at 2-8°C. <b>DO NOT FREEZE!</b> This product is photosensitive and should be protected from light
Stability:	Shelf life: one year from despatch
Gene Name:	integrin subunit beta 1
Database Link:	<a href="#">Entrez Gene 3688 Human P05556</a>
Background:	CD29 which is a transmembrane glycoprotein expressed by most leukocytes.
Synonyms:	Fibronectin receptor subunit beta, Integrin VLA-4 subunit beta, ITGB1, FNRB, MDF2, MSK12



[View online »](#)

**Product images:**

**Flow Cytometry:** Staining of Human peripheral blood lymphocytes with Mouse Anti Human CD29 antibody PE conjugated (SM1578R/RT).