

## Product datasheet for **SM1578PT**

### Integrin beta 1 (ITGB1) Mouse Monoclonal Antibody [Clone ID: 4B7R]

#### Product data:

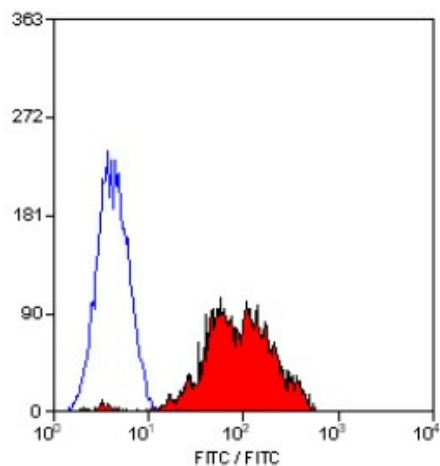
Product Type:	Primary Antibodies
Clone Name:	4B7R
Applications:	FC, IHC, IP
Recommended Dilution:	<b>Immunoprecipitation.</b> <b>Flow Cytometry:</b> Use 10 µl of 1/25-1/50 diluted antibody to label 1 <sup>0</sup> cells in 100 µl. <b>Immunohistochemistry on Paraffin Sections:</b> This product does not require protein digestion pre-treatment of paraffin sections. Not suitable for Western blotting.
Reactivity:	Human
Host:	Mouse
Isotype:	IgG1
Clonality:	Monoclonal
Immunogen:	Ocular melanoma cell line V+B2.
Specificity:	This antibody recognizes the beta 1 subunit of integrin (CD29).
Formulation:	PBS, pH7.4 containing 0.09% Sodium Azide as preservative State: Purified State: Liquid purified IgG fraction
Concentration:	lot specific
Purification:	Affinity Chromatography on Protein G
Conjugation:	Unconjugated
Storage:	Store undiluted at 2-8°C for one month or (in aliquots) at -20°C for longer. Avoid repeated freezing and thawing.
Stability:	Shelf life: one year from despatch.
Gene Name:	integrin subunit beta 1
Database Link:	<a href="#">Entrez Gene 3688 Human P05556</a>
Background:	CD29 is a transmembrane glycoprotein expressed by most leucocytes.



[View online »](#)

Synonyms: Fibronectin receptor subunit beta, Integrin VLA-4 subunit beta, ITGB1, FNRB, MDF2, MSK12

**Product images:**



Staining of Human peripheral blood lymphocytes with Mouse Anti Human CD29.