

Product datasheet for **SM1550R**

Cd68 Rat Monoclonal Antibody [Clone ID: FA-11]

Product data:

Product Type:	Primary Antibodies
Clone Name:	FA-11
Applications:	FC
Recommended Dilution:	Flow Cytometry: Use 10 µl of neat antibody to label 10 ⁶ cells in 100 µl (Membrane permeabilisation is required) . Rat anti mouse CD68 antibody, clone FA-11, has been used in many mouse models for the identification of CD68 in immunohistochemical studies, using both frozen and paraffin-embedded tissues (Masaki et al. 2003) and Devey et al. 2009). Rat anti mouse CD68 antibody, clone FA-11 can be used in flow cytometry to detect intracellular CD68, following permeabilization, and can detect surface macrosialin at low levels in resident mouse peritoneal macrophages which can be enhanced with thioglycollate stimulation.
Reactivity:	Mouse
Host:	Rat
Isotype:	IgG2a
Clonality:	Monoclonal
Immunogen:	Purified Concanavalin A acceptor glycoprotein from P815 cell line.
Specificity:	The antibody recognizes CD68. SM1550R does detect surface Macrosialin at low levels in resident Mouse peritoneal macrophages which can be enhanced with thioglycollate stimulation.
Formulation:	PBS Label: PE State: Lyophilized purified IgG fraction from tissue culture supernatant Stabilizer: 1% BSA, 5% Sucrose Preservative: 0.09% Sodium Azide Label: R. Phycoerythrin (RPE)
Reconstitution Method:	Restore with 1.0 ml distilled water.
Purification:	Affinity Chromatography on Protein G
Conjugation:	PE



[View online »](#)

Storage: Store the antibody undiluted at 2-8°C.
DO NOT FREEZE!
This product is photosensitive and should be protected from light.

Stability: Shelf life: one year from despatch.

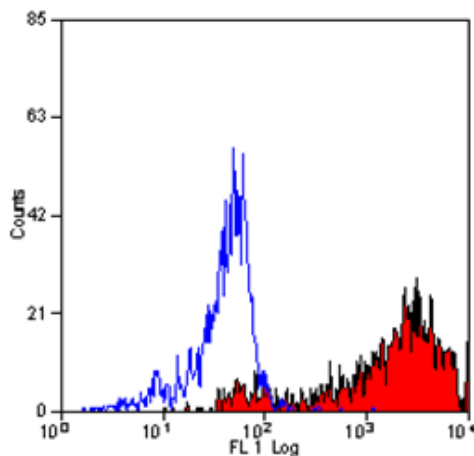
Gene Name: CD68 antigen

Database Link: [Entrez Gene 12514 Mouse P31996](#)

Background: Macrosialin is a heavily glycosylated transmembrane protein of 87-115kD, which is specifically expressed by tissue macrophages, Langerhans cells and at low levels by dendritic cells. Macrosialin is the murine homologue of the human macrophage glycoprotein CD68, both are members of the lysosomal-associated membrane protein (lamp) family which are located predominantly within the cells and can be detected by flow cytometry using cell permeabilisation.

Synonyms: Gp110, Macrosialin, Macrophage marker

Product images:



Staining of Mouse peritoneal macrophages with Rat anti Mouse CD68 antibody -RPE (SM1550R) following permeabilisation with Leucoperm.