

## Product datasheet for **SM1550PS**

### Cd68 Rat Monoclonal Antibody [Clone ID: FA-11]

#### Product data:

Product Type:	Primary Antibodies
Clone Name:	FA-11
Applications:	FC, IF, IHC, IP, WB
Recommended Dilution:	<b>Western Blot:</b> Non-reducing conditions recommended. <b>Immunoprecipitation.</b> <b>Immunofluorescence.</b> <b>Flow Cytometry:</b> Use 10 µl of 1/50-1/100 diluted antibody to label 10 <sup>6</sup> cells in 100 µl (Membrane permeabilization is required). Clone <i>FA-11</i> can be used in Flow Cytometry to detect intracellular CD68, following permeabilization, and can detect surface macrosialin at low levels in resident Mouse peritoneal macrophages which can be enhanced with thioglycollate stimulation. <b>Immunohistochemistry on Frozen Sections.</b> <b>Immunohistochemistry on Paraffin Sections.</b> Rat anti Mouse CD68 antibody, Clone <i>FA-11</i> , has been used in many mouse models for the identification of CD68 in immunohistochemical studies, using both frozen and paraffin-embedded tissues, See <i>Masaki, T. et al.</i> and <i>Devey, L. et al.</i> as examples. -This product may require antigen retrieval using heat treatment prior to staining of paraffin sections. Either sodium citrate buffer or Tris/EDTA buffer may be used for this purpose. See Martin-Manso for details. -Staining has also been achieved without antigen retrieval, See <i>Lu et al.</i> for details.
Reactivity:	Mouse
Host:	Rat
Isotype:	IgG2a
Clonality:	Monoclonal
Immunogen:	Purified Concanavalin A acceptor glycoprotein from P815 cell line.
Specificity:	Clone FA-11 recognizes mouse macrosialin, a heavily glycosylated transmembrane protein and murine homolog of human CD68, which is classified as a unique scavenger receptor (ScR) family member, due to the presence of a lysosome associated membrane protein (LAMP)-like domain.



[View online »](#)

**Formulation:** PBS  
 State: Purified  
 State: Liquid purified IgG fraction from Tissue Culture Supernatant  
 Preservative: 0.09% Sodium Azide

**Concentration:** lot specific

**Purification:** Affinity Chromatography on Protein G

**Conjugation:** Unconjugated

**Storage:** Store undiluted at 2-8°C for one month or (in aliquots) at -20°C for longer.  
 Avoid repeated freezing and thawing.

**Stability:** Shelf life: one year from despatch.

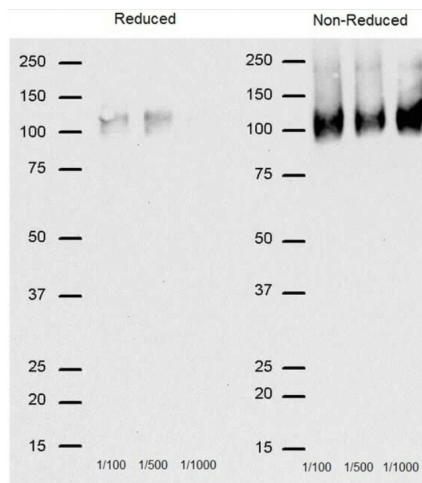
**Gene Name:** CD68 antigen

**Database Link:** [Entrez Gene 12514 Mouse P31996](#)

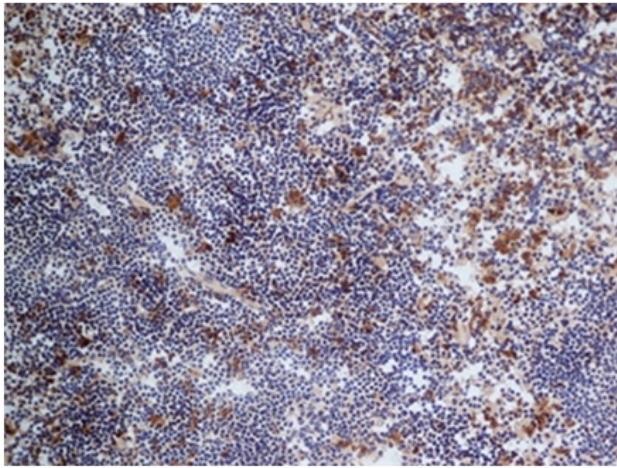
**Background:** CD68 is considered a pan macrophage marker, predominantly expressed on the intracellular lysosomes of tissue macrophages/monocytes, including Kupffer cells, microglia, histiocytes and osteoclasts, and is expressed to a lesser extent by dendritic cells and peripheral blood granulocytes.  
 CD68 is expressed by many tumor types including some B cell lymphomas, blastic NK lymphomas, melanomas, granulocytic (myeloid) sarcomas, hairy cell leukemias, and renal, urinary and pancreatic tumors, and can be used in cancer studies to demonstrate the presence/localization of macrophages.

**Synonyms:** Gp110, Macrosialin, Macrophage marker

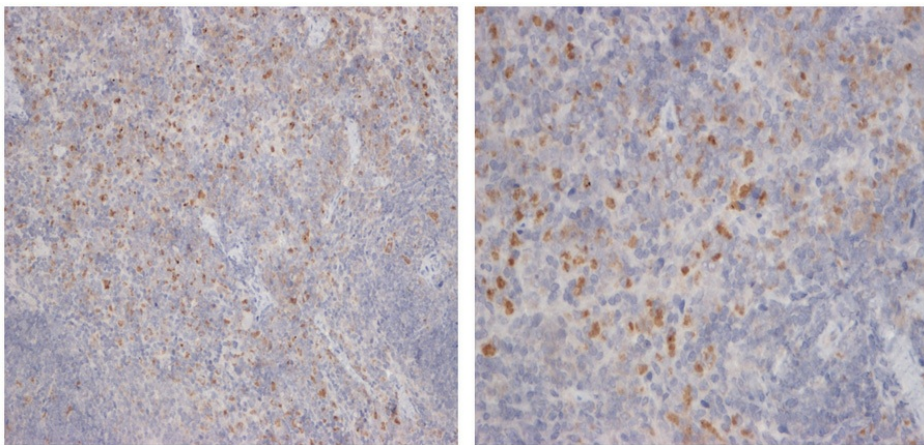
**Product images:**



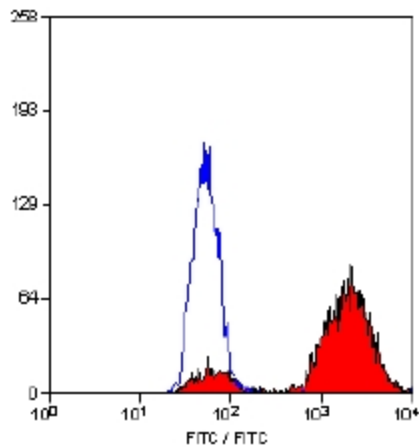
Western Blot analysis of CD68 expression on J774 cells using Rat anti Mouse CD68 Antibody (Clone FA-11) with Goat anti Rat IgG:HRP as a detection antibody



Staining of Mouse spleen cryosection with Rat anti Mouse CD68 Antibody (Clone FA-11) followed by Goat anti Rat IgG:HRP showing staining of Macrophages in the red pulp.



Staining of FFPE Mouse spleen with Rat anti Mouse CD68 Antibody (Clone FA-11) at 2 ug/ml. Antibody positive in cytoplasm of macrophages.



Staining of permeabilised Mouse peritoneal Macrophages cells with Rat anti Mouse CD68 Antibody (Clone FA-11) visualised with F(ab')<sub>2</sub> Goat Anti Rat IgG:FITC (Mouse Adsorbed).