

Product datasheet for **SM1530RT**

CD31 (PECAM1) Mouse Monoclonal Antibody [Clone ID: WM59]

Product data:

Product Type:	Primary Antibodies
Clone Name:	WM59
Applications:	FC
Recommended Dilution:	Flow Cytometry: Use 10 µl of neat antibody to label 10e6 cells or 100 µl whole blood.
Reactivity:	Human, Monkey
Host:	Mouse
Isotype:	IgG1
Clonality:	Monoclonal
Specificity:	This antibody recognises the CD31 cell surface antigen.
Formulation:	PBS, pH 7.4 containing 0.09% Sodium Azide as preservative and 1% BSA as stabilizer Label: PE State: Lyophilized purified IgG fraction Label: R. Phycoerythrin (RPE)
Reconstitution Method:	Restore with 1 ml distilled water.
Purification:	Affinity chromatography on Protein G
Conjugation:	PE
Storage:	Prior to and following reconstitution store the antibody undiluted at 2-8°C. DO NOT FREEZE! This product is photosensitive and should be protected from light.
Stability:	Shelf life: one year from despatch.
Gene Name:	platelet and endothelial cell adhesion molecule 1
Database Link:	Entrez Gene 5175 Human P16284



[View online »](#)

Background:

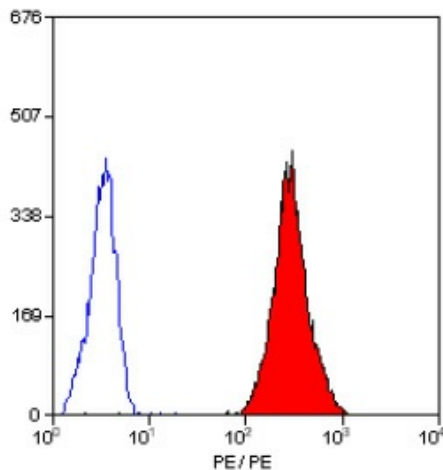
CD31, also known as platelet endothelial cell adhesion molecule 1 (PECAM1), is a type I integral membrane glycoprotein and a member of the immunoglobulin superfamily of cell surface receptors. It is constitutively expressed on the surface of endothelial cells, and concentrated at the junction between them. It is also weakly expressed on many peripheral lymphoid cells and platelets.

CD31 has been used to measure angiogenesis in association with tumor recurrence. Other studies have also indicated that CD31 and CD34 can be used as markers for myeloid progenitor cells and recognize different subsets of myeloid leukemia infiltrates (granular sarcomas).

CD31 is a 130kD glycoprotein expressed by platelets, endothelial cells, granulocytes and some lymphocytes.

Synonyms:

PECAM-1, EndoCAM, GPIIA'

Product images:

Staining of human peripheral blood platelets with Mouse Anti Human CD31 antibody -RPE ([SM1530R]/RT).