

## Product datasheet for **SM1530PT**

### CD31 (PECAM1) Mouse Monoclonal Antibody [Clone ID: WM59]

#### Product data:

Product Type:	Primary Antibodies
Clone Name:	WM59
Applications:	FC, IP
Recommended Dilution:	<b>Flow Cytometry:</b> Use 10 µl of 1/50-1/100 diluted antibody to label 10e6 cells in 100 µl. <b>Immunoprecipitation.</b>
Reactivity:	Human, Monkey
Host:	Mouse
Isotype:	IgG1
Clonality:	Monoclonal
Specificity:	This antibody clone WM59 recognizes the Human CD31 antigen, a ~130kD single pass type I transmembrane glycoprotein bearing six C2 immunoglobulin domains. The binding epitope for Mouse anti Human CD31, clone WM59 has been mapped to the Ig-like domain 2 (Fawcett et al. 1995).
Formulation:	PBS, pH 7.4 State: Purified State: Liquid purified IgG fraction from Tissue Culture Supernatant Preservative: 0.09% Sodium Azide
Concentration:	lot specific
Purification:	Affinity Chromatography on Protein G
Conjugation:	Unconjugated
Storage:	Store undiluted at 2-8°C for one month or (in aliquots) at -20°C for longer. Avoid repeated freezing and thawing.
Stability:	Shelf life: one year from despatch.
Gene Name:	platelet and endothelial cell adhesion molecule 1
Database Link:	<a href="#">Entrez Gene 5175 Human P16284</a>



[View online »](#)

**Background:**

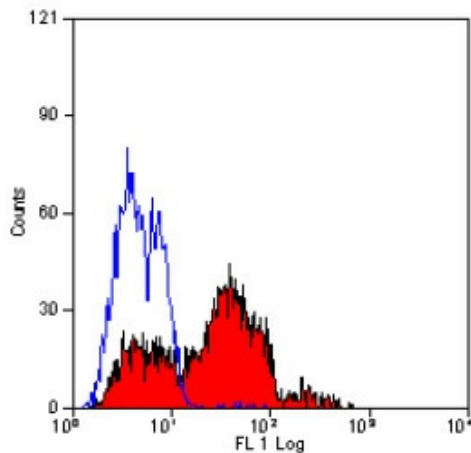
CD31, also known as platelet endothelial cell adhesion molecule 1 (PECAM1), is a type I integral membrane glycoprotein and a member of the immunoglobulin superfamily of cell surface receptors. It is constitutively expressed on the surface of endothelial cells, and concentrated at the junction between them. It is also weakly expressed on many peripheral lymphoid cells and platelets.

CD31 has been used to measure angiogenesis in association with tumor recurrence. Other studies have also indicated that CD31 and CD34 can be used as markers for myeloid progenitor cells and recognize different subsets of myeloid leukemia infiltrates (granular sarcomas).

CD31 is a 130kD glycoprotein expressed by platelets, endothelial cells, granulocytes and some lymphocytes.

**Synonyms:**

PECAM-1, EndoCAM, GPIIA'

**Product images:**

Staining of human peripheral blood lymphocytes with Mouse Anti Human CD31 antibody ([SM1530P]/PT).