

Product datasheet for **SM1529R**

CD19 Mouse Monoclonal Antibody [Clone ID: LT19]

Product data:

Product Type:	Primary Antibodies
Clone Name:	LT19
Applications:	FC
Recommended Dilution:	Flow Cytometry: Use 10 µl of neat antibody to label 10 ⁶ cells or cells or 100 µl whole blood.
Reactivity:	Human
Host:	Mouse
Isotype:	IgG1
Clonality:	Monoclonal
Specificity:	This antibody recognises the CD19. This antibody labels all B lymphocytes in peripheral blood and spleen but is negative on granulocytes, monocytes, platelets, T lymphocytes and erythrocytes. This antibody is useful for enumerating normal B lymphocytes and typing B cell malignancies by flow cytometry and immunofluorescence. The antibody reacts with most B cell malignancies including chronic leukemia and most lymphomas, but not multiple myeloma.
Formulation:	PBS, pH 7.4 Label: PE State: Lyophilized purified IgG fraction. Stabilizer: 1% BSA Preservative: 0.09% Sodium Azide Label: R. Phycoerythrin (RPE)
Reconstitution Method:	Restore with 1 ml distilled water
Conjugation:	PE
Storage:	Prior to and following reconstitution store the antibody undiluted at 2-8°C. DO NOT FREEZE! This product is photosensitive and should be protected from light.
Stability:	Shelf life: one year from despatch.
Gene Name:	CD19 molecule
Database Link:	Entrez Gene 930 Human P15391

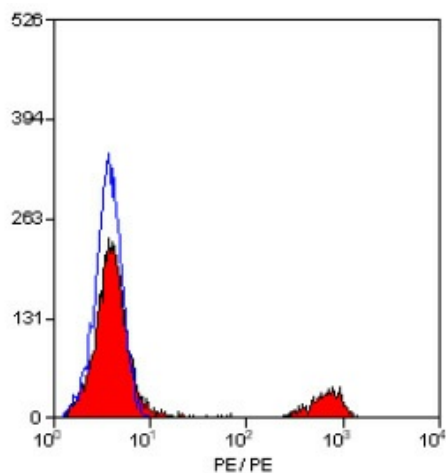


[View online »](#)

Background: CD19, a cell surface antigen a 96kD single chain glycoprotein on the surface of human B lineage cells, including pre-B cells. B cells can be detected in peripheral blood and tissues.

Synonyms: Leu-12, B-cell marker

Product images:



Staining of human peripheral blood lymphocytes with Mouse Anti Human CD19-RPE (SM1529R/RT).