

## Product datasheet for **SM1529FT**

### CD19 Mouse Monoclonal Antibody [Clone ID: LT19]

#### Product data:

Product Type:	Primary Antibodies
Clone Name:	LT19
Applications:	FC
Recommended Dilution:	Flow Cytometry: Use 10µl of Neat-1/10 diluted antibody to label 10e6 cells in 100µl.
Reactivity:	Human
Host:	Mouse
Isotype:	IgG1
Clonality:	Monoclonal
Specificity:	<p>This antibody recognises the CD19 cell surface antigen. It labels all B lymphocytes in peripheral blood and spleen but is negative on granulocytes, monocytes, platelets, T lymphocytes and erythrocytes.</p> <p>The antibody reacts with most B cell malignancies including chronic leukaemia and most lymphomas, but not multiple myeloma.</p>
Formulation:	<p>PBS, pH 7.2, containing 1% BSA as stabilizer and 0.09% Sodium Azide as preservative.</p> <p>Label: FITC</p> <p>State: Liquid purified IgG fraction.</p> <p>Label: Fluorescein Isothiocyanate Isomer 1</p>
Concentration:	lot specific
Purification:	Affinity Chromatography on Protein G
Conjugation:	FITC
Storage:	<p>Store the antibody undiluted at 2-8°C for one month or (in aliquots) at -20°C for longer.</p> <p>This product is photosensitive and should be protected from light.</p> <p>Avoid repeated freezing and thawing.</p>
Stability:	Shelf life: one year from despatch.
Gene Name:	CD19 molecule
Database Link:	<a href="#">Entrez Gene 930 Human P15391</a>

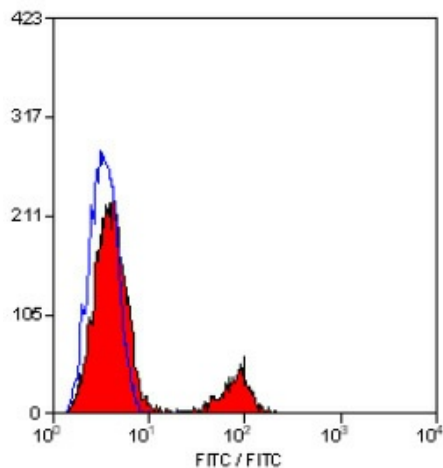


[View online »](#)

**Background:** Human CD19 cell surface antigen is a 96 kD single chain glycoprotein on the surface of human B lineage cells, including pre-B cells. B cells can be detected in peripheral blood and tissues.

**Synonyms:** Leu-12, B-cell marker

**Product images:**



Staining of human peripheral blood lymphocytes with Mouse Anti Human CD19-FITC (SM1529F/FT).