

Product datasheet for **SM1525PS**

CD10 (MME) Mouse Monoclonal Antibody [Clone ID: SN5c]

Product data:

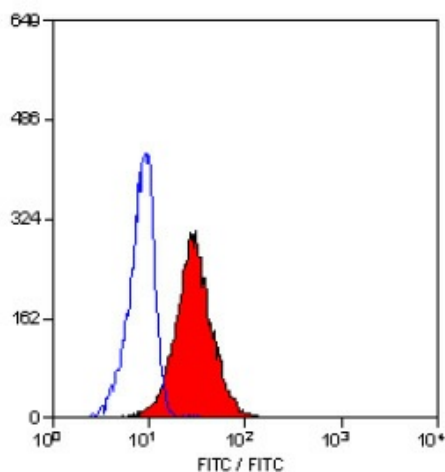
Product Type:	Primary Antibodies
Clone Name:	SN5c
Applications:	FC, IHC, IP, WB
Recommended Dilution:	Flow Cytometry: 1/100-1/200. Immunohistochemistry on Frozen Sections. Immunoprecipitation. Western Blot.
Reactivity:	Human
Host:	Mouse
Isotype:	IgG1
Clonality:	Monoclonal
Immunogen:	Partially purified cell membrane antigens from fresh leukemia cells. Spleen cells from immunised BALB/c mice were fused with cells of the mouse PS/NS1/1-Ag4-1 myeloma cell line.
Specificity:	This antibody recognises the CD10 cell surface antigen.
Formulation:	PBS, pH7.4 containing 0.09% Sodium Azide as preservative. State: Purified State: Liquid purified IgG fraction.
Concentration:	lot specific
Purification:	Affinity chromatography on Protein G
Conjugation:	Unconjugated
Storage:	Store the antibody undiluted at 2-8°C for one month or (in aliquots) at -20°C for longer. Avoid repeated freezing and thawing.
Stability:	Shelf life: one year from despatch.
Gene Name:	membrane metallo-endopeptidase
Database Link:	Entrez Gene 4311 Human P08473


[View online »](#)

Background: CD10 is a 100kD glycoprotein expressed by acute lymphoblastic leukaemia cells and by peripheral blood granulocytes. CD10 is also known as the Common Acute Lymphoblastic Leukaemia Antigen (CALLA).

Synonyms: MME, EPN, Neutral endopeptidase 24.11, Neutral endopeptidase, NEP, Enkephalinase, Atriopeptidase, CALLA

Product images:



Staining of human peripheral blood granulocytes with MOUSE ANTI HUMAN CD10.