

Product datasheet for **SM1525FT**

CD10 (MME) Mouse Monoclonal Antibody [Clone ID: SN5c]

Product data:

Product Type:	Primary Antibodies
Clone Name:	SN5c
Applications:	FC
Recommended Dilution:	Flow Cytometry: Use 10 µl of neat antibody to label 10 ⁶ cells in 100 µl.
Reactivity:	Human
Host:	Mouse
Isotype:	IgG1
Clonality:	Monoclonal
Immunogen:	Partially purified cell membrane antigens from fresh leukemia cells. Spleen cells from immunised BALB/c mice were fused with cells of the mouse PS/NS1/1-Ag4-1 myeloma cell line.
Specificity:	This antibody recognizes the CD10 cell surface antigen.
Formulation:	PBS, pH 7.4 Label: FITC State: Liquid purified IgG fraction Stabilizer: 1% BSA Preservative: 0.09% Sodium Azide Label: Fluorescein Isothiocyanate Isomer 1
Concentration:	lot specific
Purification:	Affinity Chromatography on Protein G
Conjugation:	FITC
Storage:	Store the antibody undiluted at 2-8°C for one month or (in aliquots) at -20°C for longer. Avoid repeated freezing and thawing. This product is photosensitive and should be protected from light.
Stability:	Shelf life: one year from despatch.
Gene Name:	membrane metallo-endopeptidase
Database Link:	Entrez Gene 4311 Human P08473

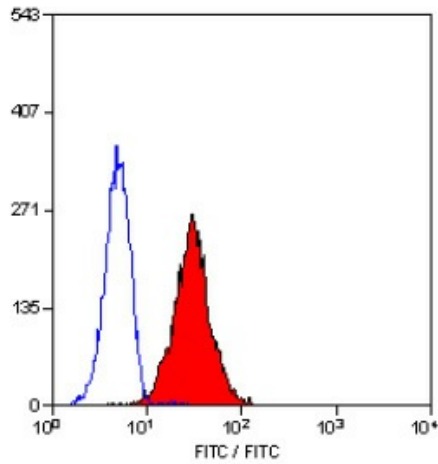


[View online »](#)

Background: CD10 is a 100kD glycoprotein expressed by acute lymphoblastic leukaemia cells and by peripheral blood granulocytes. CD10 is also known as the Common Acute Lymphoblastic Leukaemia Antigen (CALLA).

Synonyms: MME, EPN, Neutral endopeptidase 24.11, Neutral endopeptidase, NEP, Enkephalinase, Atriopeptidase, CALLA

Product images:



Staining of Human peripheral blood granulocytes with Mouse Anti Human CD10-FITC.