

## Product datasheet for **SM1525APC**

### CD10 (MME) Mouse Monoclonal Antibody [Clone ID: SN5c]

#### Product data:

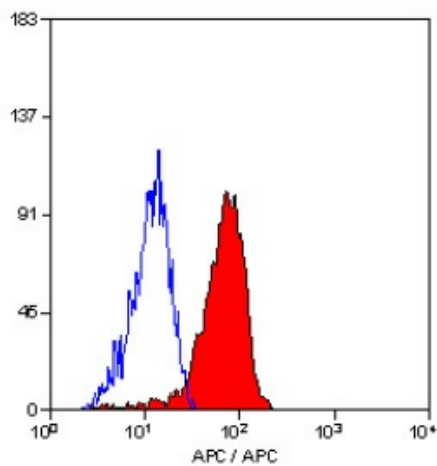
Product Type:	Primary Antibodies
Clone Name:	SN5c
Applications:	FC
Recommended Dilution:	Flow Cytometry.
Reactivity:	Human
Host:	Mouse
Isotype:	IgG1
Clonality:	Monoclonal
Immunogen:	Partially purified cell membrane antigens from fresh leukemia cells. Spleen cells from immunised BALB/c mice were fused with cells of the mouse PS/NS1/1-Ag4-1 myeloma cell line.
Specificity:	This antibody recognises the CD10 cell surface antigen.
Formulation:	PBS, pH 7.4, containing 1% BSA as stabilizer and 0.09% Sodium Azide as preservative. Label: APC State: Lyophilized purified IgG fraction. Label: Allophycocyanin
Reconstitution Method:	Restore with 1 ml distilled water.
Purification:	Affinity chromatography on Protein G.
Conjugation:	APC
Storage:	Prior to and following reconstitution store the antibody undiluted at 2-8°C. <b>DO NOT FREEZE!</b>
Stability:	Shelf life: one year from despatch.
Gene Name:	membrane metallo-endopeptidase
Database Link:	<a href="#">Entrez Gene 4311 Human P08473</a>
Background:	CD10 is a 100kD glycoprotein expressed by acute lymphoblastic leukaemia cells and by peripheral blood granulocytes. CD10 is also known as the Common Acute Lymphoblastic Leukaemia Antigen (CALLA).



[View online »](#)

**Synonyms:** MME, EPN, Neutral endopeptidase 24.11, Neutral endopeptidase, NEP, Enkephalinase, Atriopeptidase, CALLA

**Product images:**



Staining of human peripheral blood granulocytes with Mouse Anti Human CD10-APC (SM1525APC/APCT).