

Product datasheet for **SM1505P**

Equine IgGb Mouse Monoclonal Antibody [Clone ID: CVS39]

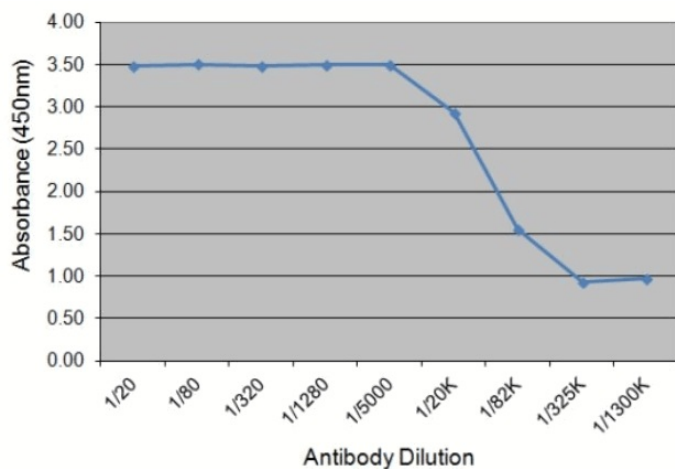
Product data:

Product Type:	Secondary Antibodies
Product Name:	Equine IgGb Mouse Monoclonal Antibody [Clone ID: CVS39]
Clone Name:	CVS39
Applications:	ELISA
Recommended Dilution:	ELISA.
Reactivity:	Equine
Host:	Mouse
Immunogen:	Purified Equine IgGb. Spleen cells from immunised Balb/c mice were fused with cells of the mouse X63-Ag8.653 myeloma cell line.
Isotype:	IgG1
Formulation:	PBS State: Purified State: Liquid purified IgG fraction from Tissue Culture Supernatant Preservative: 0.09% Sodium Azide
Concentration:	lot specific
Purification:	Affinity Chromatography on Protein G
Conjugation:	Unconjugated
Storage:	Store undiluted at 2-8°C for one month or (in aliquots) at -20°C for longer. Avoid repeated freezing and thawing.



[View online »](#)

Product images:



Purified Horse IgG (PEP001) detected with Mouse anti Horse IgG (Cat.-No SM1505P) followed by Rabbit F(ab')₂ anti Mouse IgG:HRP (Cat.-No [SP1012HRP])