

Product datasheet for **SM1473R**

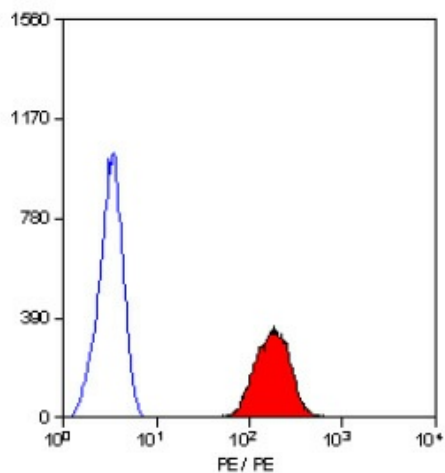
Glycophorin A (GYPA) Rat Monoclonal Antibody [Clone ID: YTH89.1]

Product data:

Product Type:	Primary Antibodies
Clone Name:	YTH89.1
Applications:	FC
Recommended Dilution:	Flow Cytometry: Neat-1/10; Use 10µl of the suggested working dilution to label 10e6 cells in 100µl.
Reactivity:	Human
Host:	Rat
Isotype:	IgG2b
Clonality:	Monoclonal
Immunogen:	Spleen cells from immunised DA rats were fused with cells of the Y3/Ag.1.2.3.
Specificity:	This antibody recognises glycophorin A (CD235a).
Formulation:	PBS containing 0.09% Sodium Azide as preservative and 1% BSA as stabilizer. Label: PE State: Lyophilized purified IgG fraction. Label: R. Phycoerythrin (RPE)
Reconstitution Method:	Restore with 1 ml distilled water.
Concentration:	lot specific
Conjugation:	PE
Storage:	Prior to and following reconstitution store the antibody undiluted at 2-8°C. DO NOT FREEZE! This product is photosensitive and should be protected from light.
Stability:	Shelf life: one year from despatch.
Gene Name:	glycophorin A (MNS blood group)
Database Link:	Entrez Gene 2993 Human P02724
Background:	CD235a is a major sialoglycoprotein of the human erythrocyte membrane.
Synonyms:	Glycophorin-A, GPA, PAS-2, Sialoglycoprotein alpha, MN sialoglycoprotein



[View online »](#)

Product images:

Staining of human peripheral blood erythrocytes with Rat Anti Human CD235a-RPE.