

## Product datasheet for **SM1473P**

### Glycophorin A (GYPA) Rat Monoclonal Antibody [Clone ID: YTH89.1]

#### Product data:

Product Type:	Primary Antibodies
Clone Name:	YTH89.1
Applications:	CT, FC, IHC
Recommended Dilution:	Flow Cytometry: (1/10-1/25). Cytotoxic Assays. Immunohistochemistry on Frozen Sections (1/100-1/1000). Immunohistochemistry on Paraffin Sections (1/100-1/1000). This product does not require antigen retrieval using heat treatment prior to staining of paraffin sections. Recommended positive Control: Human hypophysis.
Reactivity:	Human
Host:	Rat
Isotype:	IgG2b
Clonality:	Monoclonal
Immunogen:	Human red blood cells followed by purified glycophorin A. Spleen cells from immunised DA rats were fused with cells of the Y3/Ag.1.2.3.
Specificity:	This antibody recognises glycophorin A.
Formulation:	PBS containing 0.09% Sodium Azide as preservative. State: Purified State: Liquid purified IgG fraction.
Concentration:	lot specific
Purification:	Affinity Chromatography on Protein G.
Conjugation:	Unconjugated
Storage:	Store the antibody undiluted at 2-8°C for one month or (in aliquots) at -20°C for longer. Avoid repeated freezing and thawing.
Stability:	Shelf life: one year from despatch.
Gene Name:	glycophorin A (MNS blood group)
Database Link:	<a href="#">Entrez Gene 2993 Human P02724</a>

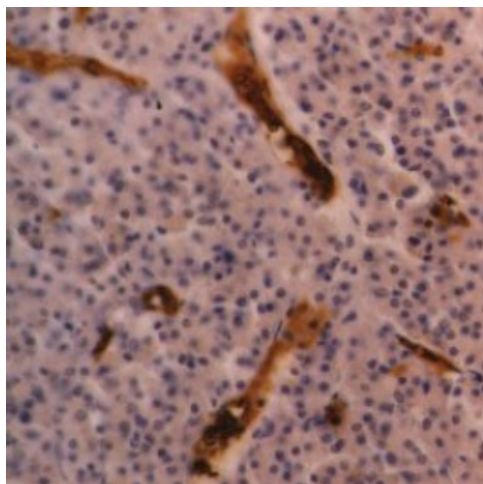


[View online »](#)

**Background:** Glycophorin A is a major sialoglycoprotein of the human erythrocyte membrane.

**Synonyms:** Glycophorin-A, GPA, PAS-2, Sialoglycoprotein alpha, MN sialoglycoprotein

**Product images:**



CD235a (Glycophorin A) - Human hypophysis showing erythrocyte labelling in sinusoids. Formalin Fixed, Paraffin processed tissue.