

## Product datasheet for **SM1473FT**

### Glycophorin A (GYPA) Rat Monoclonal Antibody [Clone ID: YTH89.1]

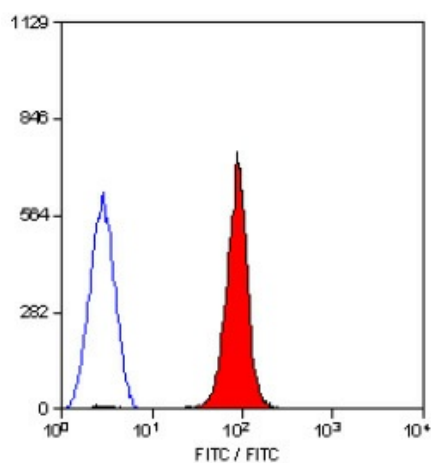
#### Product data:

Product Type:	Primary Antibodies
Clone Name:	YTH89.1
Applications:	FC
Recommended Dilution:	<b>Flow Cytometry:</b> Use 10µl of Neat antibody to label 10 <sup>6</sup> cells in 100µl.
Reactivity:	Human
Host:	Rat
Isotype:	IgG2b
Clonality:	Monoclonal
Immunogen:	Human red blood cells followed by purified glycophorin A. Spleen cells from immunised DA rats were fused with cells of the Y3/Ag.1.2.3.
Specificity:	This antibody recognises glycophorin A.
Formulation:	PBS containing 0.09% Sodium Azide as preservative and 1% BSA as stabilizer. Label: FITC State: Liquid purified Ig fraction. Label: Fluorescein Isothiocyanate Isomer 1
Concentration:	lot specific
Purification:	Ammonium Sulphate Precipitation.
Conjugation:	FITC
Storage:	Store the antibody undiluted at 2-8°C for one month or (in aliquots) at -20°C for longer. This product is photosensitive and should be protected from light. Avoid repeated freezing and thawing.
Stability:	Shelf life: one year from despatch.
Gene Name:	glycophorin A (MNS blood group)
Database Link:	<a href="#">Entrez Gene 2993 Human P02724</a>
Background:	Glycophorin A is a major sialoglycoprotein of the human erythrocyte membrane.
Synonyms:	Glycophorin-A, GPA, PAS-2, Sialoglycoprotein alpha, MN sialoglycoprotein



[View online »](#)

## Product images:



Staining of human peripheral blood erythrocytes with Rat Anti Human CD235a-FITC.