

## Product datasheet for **SM1461PT**

### Synaptophysin (SYP) Mouse Monoclonal Antibody [Clone ID: SP15]

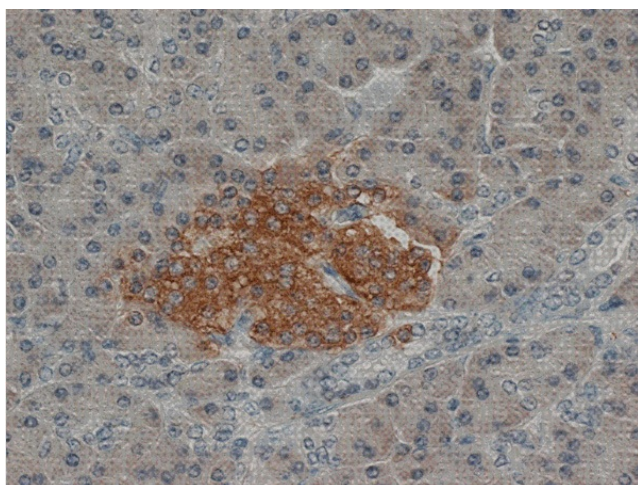
#### Product data:

Product Type:	Primary Antibodies
Clone Name:	SP15
Applications:	ELISA, IHC, WB
Recommended Dilution:	<b>ELISA.</b> <b>Western Blot:</b> 1/500. <b>Immunohistochemistry on Paraffin Sections:</b> 1/25. Requires antigen retrieval using heat treatment prior to staining of paraffin sections. Sodium citrate buffer pH 6.0 is recommended for this purpose. <b>Recommended Positive Control:</b> Pancreas.
Reactivity:	Hamster, Human, Porcine, Rat
Host:	Mouse
Isotype:	IgM
Clonality:	Monoclonal
Immunogen:	Crude Human Synaptophysin immunoprecipitate. Spleen cells from immunised BALB/c mice were fused with cells of the NSO mouse myeloma cell line.
Specificity:	This antibody recognizes an antigen which appears to be identical to the synaptic vesicle protein synaptophysin. It reacts with Synaptophysin expressed in CHO cells (3., 8.). Mouse anti Human Synaptophysin antibody, clone SP15 recognizes Human Synaptophysin. This Synaptophysin antibody, clone SP15 has been used for the detection of synaptophysin by Immunofluorescence, Immunohistochemistry and Western blotting on murine (Vitry et al. 2009), marmoset (Ramirez et al. 2001), rat (Barr et al. 2004), lapine (Roher et al. 2000) and human tissues (Beach et al. 1997).
Formulation:	PBS, pH 7.2 State: Purified State: Liquid purified IgM fraction from Tissue Culture Supernatant Preservative: 0.09% Sodium Azide
Concentration:	lot specific
Purification:	Gel filtration



[View online »](#)

<b>Conjugation:</b>	Unconjugated
<b>Storage:</b>	Store undiluted at 2-8°C for one month or (in aliquots) at -20°C for longer. Avoid repeated freezing and thawing.
<b>Stability:</b>	Shelf life: one year from despatch.
<b>Gene Name:</b>	synaptophysin
<b>Database Link:</b>	<a href="#">Entrez Gene 24804 Rat</a> <a href="#">Entrez Gene 6855 Human</a> <a href="#">P08247</a>
<b>Background:</b>	Synaptophysin, also known as Major synaptic vesicle protein p38 is a 313 amino acid synaptic vesicle associated protein of ~38kDa containing a single marvel domain. Synaptophysin expression is ubiquitous in synaptic vesicle membranes where it is the most abundant protein and is involved in the regulation of endocytosis (Kwon et al. 2011) Loss and atypical expression of synaptophysin is noted in conditions such as Huntindon's disease (Goto and Hirano 1990) and Alzheimer's disease (Masliah et al. 1989). Mutations in the synaptophysin gene have been identified and lead to a condition, Mental retardation, X-linked 96 (Tarpey et al. 2009).
<b>Synonyms:</b>	Neuroendocrine Marker
<b>Protein Families:</b>	Secreted Protein, Transmembrane

**Product images:**

Staining of human pancreas with Mouse anti Human Synaptophysin.