

Product datasheet for **SM1453S**

Myelin Basic Protein (MBP) (84-89) Mouse Monoclonal Antibody [Clone ID: 22]

Product data:

Product Type:	Primary Antibodies
Clone Name:	22
Applications:	IHC, WB
Recommended Dilution:	Immunohistochemistry on Frozen Sections. Immunohistochemistry on Paraffin Sections. <i>Recommended Positive Control: Brain.</i> Has been reported to work in Western blotting .
Reactivity:	Human, Mammalian
Host:	Mouse
Isotype:	IgG2b
Clonality:	Monoclonal
Immunogen:	Human myelin basic protein. Spleen cells from immunised mice were fused with cells of the mouse SP2/0 myeloma cell line.
Specificity:	This antibody recognises an epitope of Human myelin basic protein between amino acids 84-89. Reacts with MBP from most species.
Formulation:	State: Supernatant State: Liquid Tissue Culture Supernatant Preservative: 0.09% Sodium Azide
Conjugation:	Unconjugated
Storage:	Store undiluted at 2-8°C for one month or (in aliquots) at -20°C for longer. Avoid repeated freezing and thawing.
Stability:	Shelf life: one year from despatch.
Gene Name:	myelin basic protein
Database Link:	Entrez Gene 4155 Human P02686



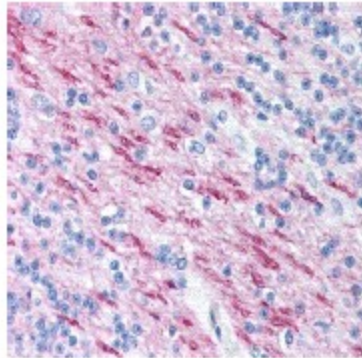
[View online »](#)

Background:

The classic group of Myelin basic protein (MBP) isoforms (isoforms 4 to 14) are with PLP the most abundant protein components of the myelin membrane in the CNS. They have a role in both its formation and stabilization. The smaller isoforms might have an important role in remyelination of denuded axons in multiple sclerosis. The non classic group of MBP isoforms (isoforms 1 to 3/Golli MBPs) may preferentially have a role in the early developing brain long before myelination, maybe as components of transcriptional complexes, and may also be involved in signaling pathways in T cells and neural cells. Differential splicing events combined to optional posttranslational modifications give a wide spectrum of isomers, each of them having maybe a specialized function.

Synonyms:

MBP

Product images:

Staining of white matter in human brain with Mouse anti MBP