

Product datasheet for **SM1444P**

ErbB 3 (ERBB3) Mouse Monoclonal Antibody [Clone ID: SGP.1]

Product data:

Product Type:	Primary Antibodies
Clone Name:	SGP.1
Applications:	ELISA, FC, IHC, IP
Recommended Dilution:	Flow cytometry. Immunohistochemistry on frozen sections (5-10 µg/ml no special pretreatment required). Immunoprecipitation. ELISA. Not suitable for paraffin sections and western blotting.
Reactivity:	Human
Host:	Mouse
Isotype:	IgG1
Clonality:	Monoclonal
Immunogen:	Wheat germ lectin purified ErbB3 protein
Specificity:	This antibody recognises an extra cellular domain of the ErbB3 protein.
Formulation:	PBS, pH 7.4, with 0.09% sodium azide State: Purified State: Liquid purified IgG fraction
Concentration:	lot specific
Purification:	Protein A chromatography
Conjugation:	Unconjugated
Storage:	Store the antibody undiluted at 2-8°C for up to one month or at -20°C for longer. Avoid repeated freezing and thawing.
Stability:	Shelf life one year from despatch.
Gene Name:	erb-b2 receptor tyrosine kinase 3
Database Link:	Entrez Gene 2065 Human P21860

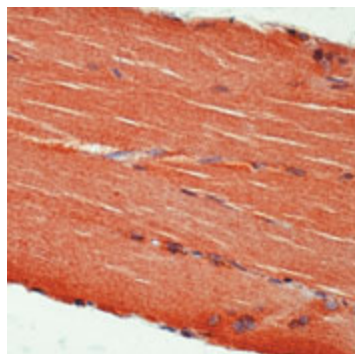


[View online »](#)

Background: ErbB3 is a 180 kD glycoprotein which is a growth factor receptor with tyrosine kinase activity. ErbB3 is expressed widely in normal human tissues, but is overexpressed in some tumours, including those of the breast, stomach, pancreas and colon.

Synonyms: ERBB-3, c-erbB-3, HER-3

Product images:



Formalin-fixed, paraffin-embedded human skeletal muscle stained with c-erbB3 Ab using peroxidase-conjugate and AEC chromogen. Note cytoplasmic staining of muscle cells.