

Product datasheet for **SM1360PS**

Cytokeratin 18 (KRT18) Mouse Monoclonal Antibody [Clone ID: DC-10]

Product data:

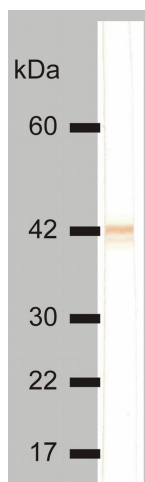
Product Type:	Primary Antibodies
Clone Name:	DC-10
Applications:	ELISA, IF, IHC, IP, WB
Recommended Dilution:	ELISA: This antibody clone <i>DC-10</i> has been tested as the detection antibody in a Sandwich ELISA for analysis of Cytokeratin 18 in combination with the clone <i>C-04</i> (Cat.-No SM3043P). Positive Control: MCF-7 Human breast adenocarcinoma cell line. Flow Cytometry: 1-4 µg/ml. Intracellular staining. Immunoprecipitation. Western Blotting(Non-Reducing Conditions): 1-2 µg/ml, overnight in 4°C. Positive Control: HeLa human cervix carcinoma cell line, MCF-7 human breast adenocarcinoma cell line. Sample preparation: Resuspend approx. 50 mil. cells in 1 ml cold Lysis buffer (1% laurylmaltoside in 20 mM Tris/Cl, 100 mM NaCl pH 8.2, 50 mM NaF including Protease inhibitor Cocktail). Incubate 60 min on ice. Centrifuge to remove cell debris. Mix lysate with non-reducing SDS-PAGE sample buffer. SDS-PAGE (10% separating gel). Immunocytochemistry. Positive Control: MCF-7 Human breast adenocarcinoma cell line, HeLa Human cervix carcinoma cell line. Immunohistochemistry on Paraffin Sections: 10 µg/ml. Positive tissue: Epithelial tissue (skin), colon.
Reactivity:	Human
Host:	Mouse
Isotype:	IgG1
Clonality:	Monoclonal
Immunogen:	Human breast carcinoma cell line PMC-42
Specificity:	The antibody reacts with Human Cytokeratin 18 (45 kDa). Cytokeratins are a member of intermediate filaments subfamily represented in epithelial tissues. Negative Species: Porcine, Mouse, Rat, Hamster, Bovine, Canine (Dog), Sheep.



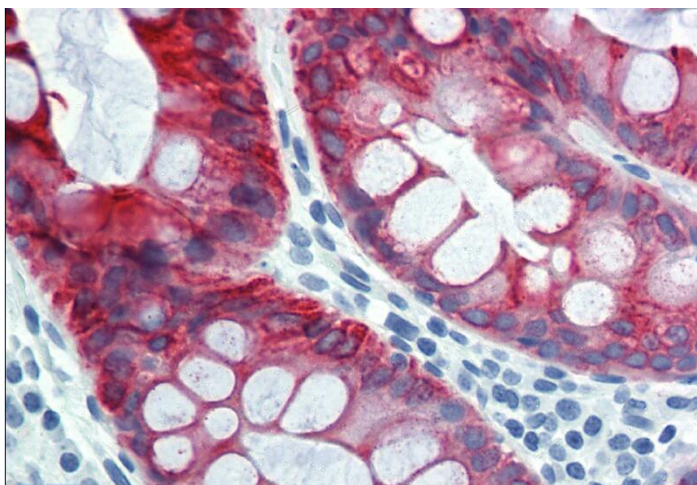
[View online »](#)

Formulation:	PBS, pH~7.4 State: Purified State: Liquid purified Ig fraction (> 95% by SDS-PAGE) Preservative: 15 mM Sodium Azide
Concentration:	lot specific
Purification:	Affinity Chromatography on Protein A
Conjugation:	Unconjugated
Storage:	Store undiluted at 2-8°C for one month or (in aliquots) at -20°C for longer. Avoid repeated freezing and thawing.
Stability:	Shelf life: one year from despatch.
Gene Name:	keratin 18
Database Link:	Entrez Gene 3875 Human P05783
Background:	Cytokeratins are a subfamily of intermediate filaments and characterized by remarkable biochemical diversity. Cytokeratins are represented in epithelial tissues by at least 20 different polypeptides, molecular weight between 40 kDa and 68 kDa. The individual cytokeratin polypeptides are designated 1 to 20 and divided into the type I (acidic cytokeratins 9-20) and type II (basic to neutral cytokeratins 1-8) families. Cytokeratin 18 belongs to type I family (acidic cytokeratins).
Synonyms:	Cytokeratin-18, CK18, Keratin-18, Keratin 18, KRT18, CYK18, K18

Product images:



Detection of cytokeratin 18 in HeLa cell lysate by mouse monoclonal antibody DC-10.



Immunohistochemistry staining of human colon (paraffin sections) using anti-cytokeratin 18 (clone DC-10).