

## Product datasheet for **SM1360F**

### Cytokeratin 18 (KRT18) Mouse Monoclonal Antibody [Clone ID: DC-10]

#### Product data:

Product Type:	Primary Antibodies
Clone Name:	DC-10
Applications:	FC, IF, IHC
Recommended Dilution:	<b>Flow Cytometry</b> Analysis and <b>Immunofluorescence</b> (5-10 µg/ml). This Monoclonal antibody is reported to work in <b>Immunohistochemistry on Paraffin Sections</b> (1/50).
Reactivity:	Human
Host:	Mouse
Isotype:	IgG1
Clonality:	Monoclonal
Immunogen:	Human breast carcinoma cell line PMC-42.
Specificity:	The antibody DC-10 reacts with Cytokeratin 18 (45 kDa). Cytokeratins are a member of intermediate filaments subfamily represented in epithelial tissues. <b>Negative Species:</b> Porcine, Mouse, Rat, Hamster, Bovine, Sheep and Canine (Dog).
Formulation:	PBS Label: FITC State: Liquid purified Ig fraction Stabilizer: 0.2% (w/v) high-grade BSA (Protease free) Preservative: 15 mM Sodium Azide Label: Fluorescein isothiocyanate under optimum conditions. Reagent is free of unconjugated
Concentration:	lot specific
Purification:	Protein A Chromatography
Conjugation:	FITC
Storage:	Store undiluted at 2-8°C. <b>DO NOT FREEZE!</b> This product is photosensitive and should be protected from light.
Stability:	Shelf life: one year from despatch.
Gene Name:	keratin 18



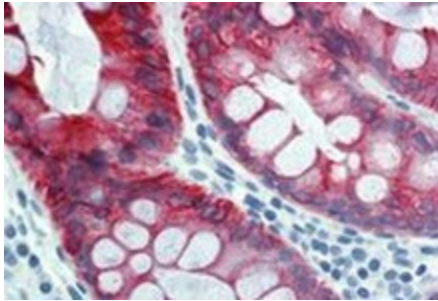
[View online »](#)

**Database Link:** [Entrez Gene 3875 Human P05783](#)

**Background:** Cytokeratins are a subfamily of intermediate filaments and characterized by remarkable biochemical diversity. Cytokeratins are represented in epithelial tissues by at least 20 different polypeptides, molecular weight between 40 kDa and 68 kDa. The individual cytokeratin polypeptides are designated 1 to 20 and divided into the type I (acidic cytokeratins 9-20) and type II (basic to neutral cytokeratins 1-8) families. Cytokeratin 18 belongs to type I family (acidic cytokeratins).

**Synonyms:** Cytokeratin-18, CK18, Keratin-18, Keratin 18, KRT18, CYK18, K18

**Product images:**



Immunohistochemistry staining of human colon (paraffin sections) using anti-cytokeratin 18 (clone DC-10).