

## Product datasheet for **SM1359PT**

### Cytokeratin 14 (KRT14) Mouse Monoclonal Antibody [Clone ID: LL002]

#### Product data:

|                       |   |
|-----------------------|---|
| Product Type:         | Primary Antibodies  |
| Clone Name:           | LL002   |
| Applications:         | FC, IF, IHC, WB   |
| Recommended Dilution: | <b>Western Blot.</b><br><b>Immunofluorescence.</b><br><b>Flow Cytometry:</b> Use 10 µl of 1/100 diluted antibody to label 10 <sup>6</sup> cells in 100 µl (Membrane permeabilisation is required).<br><b>Immunohistochemistry on Frozen Sections.</b><br><b>Immunohistochemistry on Paraffin Sections:</b> 1/200. This product requires antigen retrieval using heat treatment prior to staining of paraffin sections. Sodium citrate buffer is recommended for this purpose. Enzyme digestion is not recommended.<br><i>Recommended Positive Control:</i> Skin, tonsil or squamous cell carcinoma. |
| Reactivity:           | Human   |
| Host:                 | Mouse   |
| Isotype:              | IgG3  |
| Clonality:            | Monoclonal  |
| Immunogen:            | Last 15 C-terminal residues of Human Cytokeratin 14 conjugated to Thyroglobulin.  |
| Specificity:          | This antibody recognises Cytokeratin 14, a type I intermediate filament, expressed by stratifying epithelial cells and can be used to distinguish these cell types from simple epithelial cells, which do not express Cytokeratin 14.   |
| Formulation:          | PBS<br>State: Purified<br>State: Liquid purified IgG fraction<br>Preservative: 0.09% Sodium Azide   |
| Concentration:        | lot specific  |
| Purification:         | Ion Exchange Chromatography   |
| Conjugation:          | Unconjugated  |
| Storage:              | Store undiluted at 2-8°C for one month or (in aliquots) at -20°C for longer.<br>Avoid repeated freezing and thawing.  |



[View online »](#)

**Stability:** Shelf life: one year from despatch.

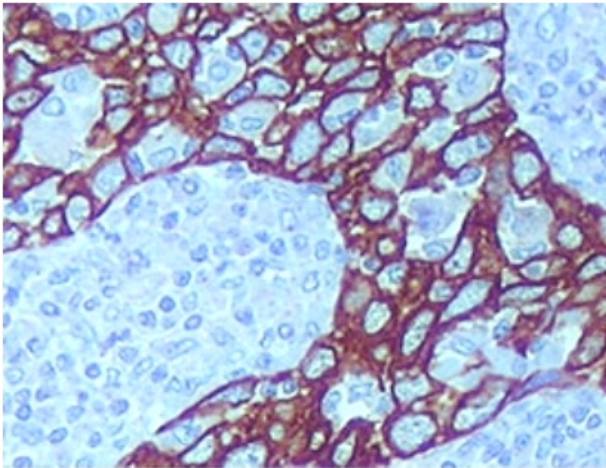
**Gene Name:** keratin 14

**Database Link:** [Entrez Gene 3861 Human P02533](#)

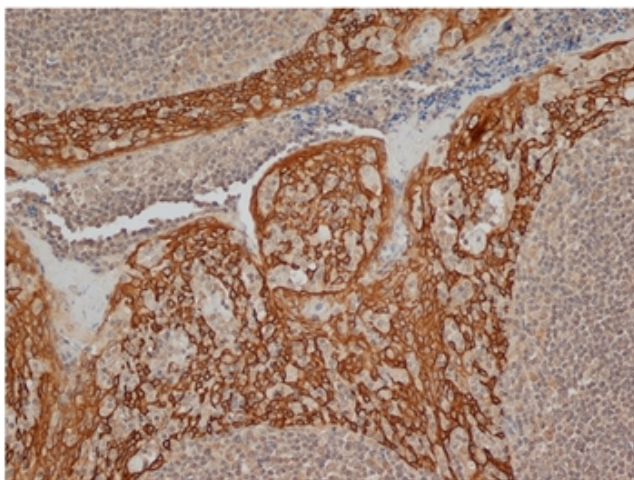
**Background:** Cytokeratin is a type I intermediate filament, expressed by stratifying epithelial cells and can be used to distinguish these cell types from simple epithelial cells, which do not express cytokeratin 14. Keratin 14 is a member of the keratin family, the most diverse group of intermediate filaments. It is usually found as a heterotetramer with two molecules of keratin 5, a type II keratin. Together they form the cytoskeleton of epithelial cells. Mutations in the genes for these keratins are associated with epidermolysis bullosa simplex. Keratin 14 has been studied as a prognostic marker in breast cancer.

**Synonyms:** Cytokeratin-14, CK14, Keratin 14, K14, KRT14

### Product images:



Formalin-Fixed, Paraffin-Embedded Human tonsil stained with Cytokeratin 14 antibody clone LL002 using peroxidase conjugate and DAB chromogen. Note the cytoplasmic staining of squamous cells.



Immunoperoxidase staining of Formalin Fixed, Paraffin Embedded human tonsil with Mouse anti Human Cytokeratin 14 Antibody following heat mediated antigen retrieval using citrate buffer, pH 6.0