

Product datasheet for **SM1359**

Cytokeratin 14 (KRT14) Mouse Monoclonal Antibody [Clone ID: LL002]

Product data:

Product Type:	Primary Antibodies
Clone Name:	LL002
Applications:	IHC, WB
Recommended Dilution:	Western blot. Immunohistochemistry on Frozen Sections. Immunohistochemistry on Formalin-Fixed, Paraffin-Embedded Sections: 1/50-1/200 Pretreatment of deparaffinized tissue with heat-induced epitope retrieval is recommended. Use Polymer anti Mouse/Rabbit IgG as a detection system. <i>Recommended Positive Control:</i> Skin, tonsil or squamous cell carcinoma.
Reactivity:	Human
Host:	Mouse
Isotype:	IgG3
Clonality:	Monoclonal
Immunogen:	A synthetic peptide of 15 amino acid residues from the C-terminus of Human Cytokeratin 14
Specificity:	LL002 distinguishes stratified epithelial cells from simple epithelial cells and has been reported useful in the identification of squamous cell carcinomas. Cellular Localization: Cytoplasmic.
Formulation:	State: Supernatant State: Liquid Tissue Culture Supernatant with 0.2% BSA and 15mM Sodium Azide.
Conjugation:	Unconjugated
Storage:	Store the antibody undiluted at 2-8°C.
Stability:	Shelf life: one year from despatch.
Gene Name:	keratin 14
Database Link:	Entrez Gene 3690 Human Entrez Gene 3861 Human P02533



[View online »](#)

Background:

Cytokeratin is a type I intermediate filament, expressed by stratifying epithelial cells and can be used to distinguish these cell types from simple epithelial cells, which do not express cytokeratin 14.

Keratin 14 is a member of the keratin family, the most diverse group of intermediate filaments. It is usually found as a heterotetramer with two molecules of keratin 5, a type II keratin. Together they form the cytoskeleton of epithelial cells. Mutations in the genes for these keratins are associated with epidermolysis bullosa simplex. Keratin 14 has been studied as a prognostic marker in breast cancer.

Synonyms:

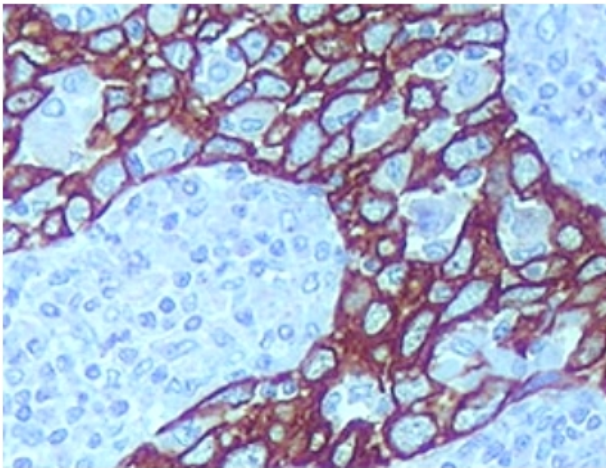
Cytokeratin-14, CK14, Keratin 14, K14, KRT14

Protein Families:

Druggable Genome, ES Cell Differentiation/IPS, Transmembrane

Protein Pathways:

Arrhythmogenic right ventricular cardiomyopathy (ARVC), Dilated cardiomyopathy, ECM-receptor interaction, Focal adhesion, Hematopoietic cell lineage, Hypertrophic cardiomyopathy (HCM), Regulation of actin cytoskeleton

Product images:

Formalin-Fixed, Paraffin-Embedded Human tonsil stained with Cytokeratin 14 antibody Cat.-No. SM1359 using peroxidase conjugate and DAB chromogen. Note the cytoplasmic staining of squamous cells.