

Product datasheet for **SM1353P**

Aggrecan (ACAN) Mouse Monoclonal Antibody [Clone ID: HAG7D4 (7D4)]

Product data:

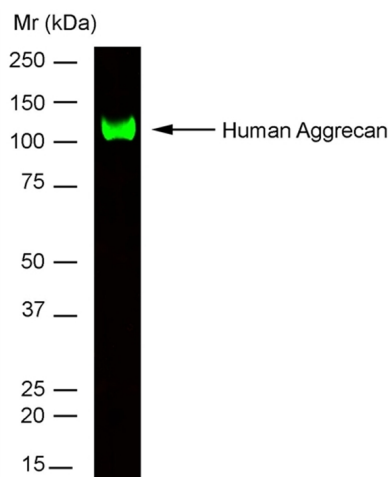
Product Type:	Primary Antibodies
Clone Name:	HAG7D4 (7D4)
Applications:	ELISA, IHC, IP, WB
Recommended Dilution:	ELISA. Western blot. Immunoprecipitation. Immunohistochemistry on Frozen Sections. Immunohistochemistry on Paraffin Sections: Requires a standard heat mediated antigen retrieval using a microwave. Histology Positive Control Tissue: Cerebral Cortex.
Reactivity:	Bovine, Human
Host:	Mouse
Isotype:	IgG1
Clonality:	Monoclonal
Immunogen:	Purified Human articular cartilage Aggrecan.
Specificity:	This antibody Clone 7D4 Cat.-No SM1353P recognizes Human Aggrecan, a proteoglycan component of cartilage matrix and member of the aggrecan/versican proteoglycan family, which forms a major component of the extracellular matrix (ECM) of both cartilage and the central nervous system (CNS). Studies also showed a difference in the relative abundance of these isoforms when comparing brain and cartilage tissues (<i>Virgintino et al.</i> 2009 in Ref.1). SM1353P recognizes epitopes within the N-terminal G1-IGD-G2 region of Aggrecan, that has been identified as a cluster 1 isoform. Negative Species: Chicken, Fish and Rat.
Formulation:	PBS State: Purified State: Liquid purified IgG fraction from Tissue Culture Supernatant Preservative: 0.09% Sodium Azide
Concentration:	lot specific
Purification:	Affinity Chromatography on Protein A



[View online »](#)

Conjugation:	Unconjugated
Storage:	Store undiluted at 2-8°C for one month or (in aliquots) at -20°C for longer. Avoid repeated freezing and thawing.
Stability:	Shelf life: One year from despatch.
Gene Name:	aggrecan
Database Link:	Entrez Gene 176 Human P16112
Background:	Aggrecan is a member of a family of large, aggregating proteoglycans (also including versican, brevican and neurocan) which is found in articular cartilage. Aggrecan is composed of three major domains: G1, G2, and G3. Between the G1 and G2 domains there is an interglobulin region (IGD). The IGD region is the major site of cleavage by specific proteases like metalloproteinases (MMPs) and aggrecanase. Aggrecan cleavage has been associated with a number of degenerative diseases including rheumatoid arthritis and osteoarthritis. There is evidence that this family of proteoglycans modulates cell adhesion, migration, and axonal outgrowth in the CNS.
Synonyms:	ACAN, AGC1, CSPG1, MSK16

Product images:



Recombinant Human Aggrecan detected with Aggrecan Antibody followed by Goat anti Mouse IgG -Dylight@800. Visualised using a LI-COR Odyssey® infrared imaging system.