

## Product datasheet for **SM1341PT**

### Amylin (IAPP) Mouse Monoclonal Antibody [Clone ID: R10/99]

#### Product data:

Product Type:	Primary Antibodies
Clone Name:	R10/99
Applications:	IF, IHC
Recommended Dilution:	<b>Immunocytochemistry/Immunofluorescence:</b> 1/10-1/500. <b>Immunohistochemistry on Frozen Sections:</b> 1/100. <b>Immunohistochemistry on Paraffin Sections:</b> 1/100. This product does not require protein digestion pre-treatment of paraffin sections. This product does not require antigen retrieval using heat treatment prior to staining of paraffin sections.
Reactivity:	Human
Host:	Mouse
Isotype:	IgG1
Clonality:	Monoclonal
Immunogen:	Synthetic peptide: CATQRLANFLV coupled to Tuberculin. Spleen cells from immunised BALB/c mouse were fused with cells of the mouse SP2/0 myeloma cell line.
Specificity:	This antibody recognizes the islet Amyloid polypeptide. The antibody is of high affinity, and stains islet amyloid peptide in intra-cellular insulin granules, intra-cellular Amyloid and extra-cellular islet Amyloid.
Formulation:	State: Supernatant State: Liquid Tissue Culture Supernatant Preservative: 0.09% Sodium Azide
Conjugation:	Unconjugated
Storage:	Store undiluted at 2-8°C for one month or (in aliquots) at -20°C for longer. Avoid repeated freezing and thawing.
Stability:	Shelf life: one year from despatch.
Gene Name:	islet amyloid polypeptide
Database Link:	<a href="#">Entrez Gene 3375 Human P10997</a>



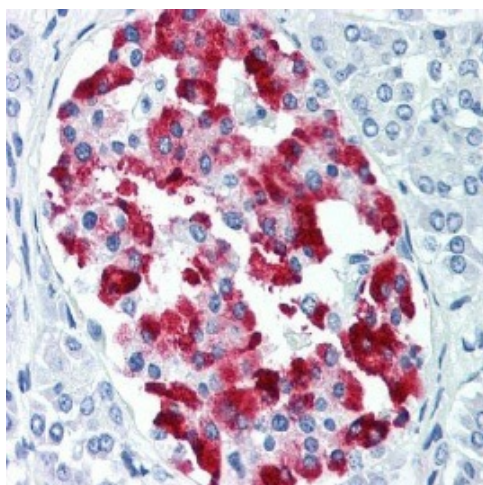
[View online »](#)

**Background:**

Amylin is commonly found in pancreatic islets of patients suffering diabetes mellitus type II, or harboring an insulinoma. While the association of amylin with the development of type II diabetes has been known for some time, a direct causative role for amylin has been harder to establish. Recent results suggest that amylin, like the related beta amyloid (A $\beta$ ) associated with Alzheimer's disease, can induce apoptotic cell death in particular cultured cells, an effect that may be relevant to the development of type II diabetes.

**Synonyms:**

AMYLIN; DAP; IAP

**Product images:**

Staining of paraffin embedded human pancreas with Mouse anti Human Amylin Peptide (Cat.-No [SM1341]), showing labeling of Islet of Langerhans