

Product datasheet for **SM1304P**

HLAB (HLA-B) Mouse Monoclonal Antibody [Clone ID: BB7.1]

Product data:

Product Type:	Primary Antibodies
Clone Name:	BB7.1
Applications:	FC
Recommended Dilution:	Flow Cytometry: Use 10 µl of 1/50 diluted antibody to label 10e6 cells or 100 µl of whole blood.
Reactivity:	Human
Host:	Mouse
Isotype:	IgG1
Clonality:	Monoclonal
Immunogen:	Papain solubilized HLA-B7 antigen.
Specificity:	This antibody recognises the HLA-B7 antigen and does not cross-react with HLA-B27 or other related antigens. It can be used to distinguish true HLA-B27 positives from false HLA-B27 positives (i.e. HLA-B7 positive) in the investigation of diseases such as ankylosing spondylitis and anterior uveitis.
Formulation:	PBS, pH 7.4 containing 0.09% Sodium Azide as preservative. State: Purified State: Liquid purified IgG fraction.
Concentration:	lot specific
Purification:	Affinity Chromatography on Protein A.
Conjugation:	Unconjugated
Storage:	Store the antibody undiluted at 2-8°C for one month or (in aliquots) at -20°C for longer. Avoid repeated freezing and thawing.
Stability:	Shelf life: one year from despatch.
Gene Name:	major histocompatibility complex, class I, B
Database Link:	Entrez Gene 3106 Human P01889



[View online »](#)

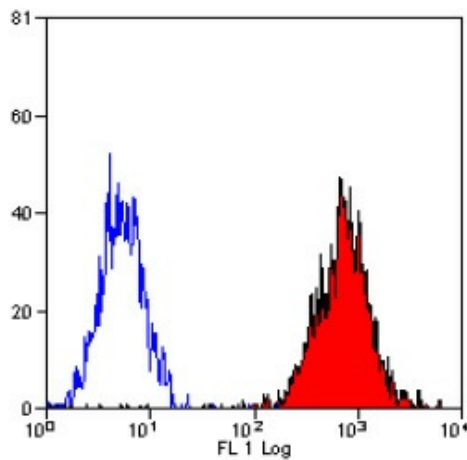
Background:

HLA B belongs to the HLA class I heavy chain paralogues. This class I molecule is a heterodimer consisting of a heavy chain and a light chain (beta 2 microglobulin). The heavy chain is anchored in the membrane. Class I molecules play a central role in the immune system by presenting peptides derived from the endoplasmic reticulum lumen. They are expressed in nearly all cells. The heavy chain is approximately 45 kDa. Hundreds of HLA B alleles have been described.

Human Leukocyte Antigens are highly polymorphic proteins that are involved in the presentation of antigens to the T-cell receptor. There are two classes of HLA antigens, class I (HLA-A, HLA-B and HLA-C) and class II (HLA-D). This antibody can be used for HLA typing.

Synonyms:

HLAB, MHC class I antigen B7

Product images:

Staining of human peripheral blood lymphocytes from an HLA-B7 positive donor with mouse anti human HLA-B7.