

## Product datasheet for **SM1304F**

### HLAB (HLA-B) Mouse Monoclonal Antibody [Clone ID: BB7.1]

#### Product data:

Product Type:	Primary Antibodies
Clone Name:	BB7.1
Applications:	FC
Recommended Dilution:	<b>Flow Cytometry:</b> Use 10 µl of neat-1/10 diluted antibody to label 1x10 <sup>6</sup> cells in 100 µl whole blood.
Reactivity:	Human
Host:	Mouse
Isotype:	IgG1
Clonality:	Monoclonal
Immunogen:	Papain solubilized HLA-B7 antigen.
Specificity:	This antibody recognises the Human HLA-B7 antigen and does not cross-react with HLA-B27 or other related HLA antigens. It can be used to distinguish true HLA-B27 positives from false HLA-B27 positives (i.e. HLA-B7 positive) in the investigation of such diseases as ankylosing spondylitis and anterior uveitis.
Formulation:	PBS, pH 7.4 Label: FITC State: Liquid purified IgG fraction from Tissue Culture Supernatant Stabilizer: 1% BSA Preservative: 0.09% Sodium Azide Label: Fluorescein Isothiocyanate Isomer 1
Concentration:	lot specific
Purification:	Affinity Chromatography on Protein G
Conjugation:	FITC
Storage:	Store undiluted at 2-8°C for one month or (in aliquots) at -20°C for longer. This product is photosensitive and should be protected from light. Should this product contain a precipitate we recommend micro-centrifugation before use. Avoid repeated freezing and thawing.
Stability:	Shelf life: one year from despatch.



[View online »](#)

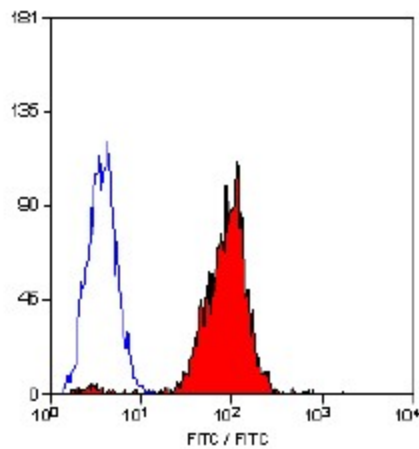
**Gene Name:** major histocompatibility complex, class I, B

**Database Link:** [Entrez Gene 3106 Human P01889](#)

**Background:** HLA B belongs to the HLA class I heavy chain paralogues. This class I molecule is a heterodimer consisting of a heavy chain and a light chain (beta 2 microglobulin). The heavy chain is anchored in the membrane. Class I molecules play a central role in the immune system by presenting peptides derived from the endoplasmic reticulum lumen. They are expressed in nearly all cells. The heavy chain is approximately 45 kDa. Hundreds of HLA B alleles have been described. The HLA B gene is part of the human HLA complex on chromosome 6 and there are a large number of variant alleles of this gene.

**Synonyms:** HLAB, MHC class I antigen B7

### Product images:



Staining of human peripheral blood lymphocytes with MOUSE ANTI HUMAN HLAB7-FITC