

## Product datasheet for **SM1303F**

### **B-Cells (FMC7 Antigen) Mouse Monoclonal Antibody [Clone ID: FMC7]**

#### **Product data:**

<b>Product Type:</b>	Primary Antibodies
<b>Clone Name:</b>	FMC7
<b>Applications:</b>	FC
<b>Recommended Dilution:</b>	<b>Flow Cytometry:</b> Use 10 µl of neat antibody to label 10e6 cells or 100 µl whole blood.
<b>Reactivity:</b>	Human
<b>Host:</b>	Mouse
<b>Isotype:</b>	IgM
<b>Clonality:</b>	Monoclonal
<b>Immunogen:</b>	HRIK cells - Human B-Lymphoblastoid line.
<b>Specificity:</b>	This antibody recognizes a glycoprotein antigen of 105kD expressed by B lymphocytes. B-CLL is generally considered to be negative for FMC7 expression, but strong staining is seen in many other types of B cell lymphoma, including prolymphocytic leukaemia and hairy cell leukaemia. The expression pattern closely corresponds to that seen with CD22, but studies have shown that FMC7 does not recognise the CD22 molecule itself. A recent publication by Serke et al has shown that FMC7 recognises a conformational epitope on the CD20 molecule, most likely a multimeric complex of CD20.
<b>Formulation:</b>	TRIS buffered glycine containing 0.09% Sodium Azide and 0.2% BSA Label: FITC State: Liquid purified IgM Label: Fluorescein Isothiocyanate Isomer 1
<b>Purification:</b>	Gel Filtration
<b>Conjugation:</b>	FITC
<b>Storage:</b>	Store the antibody undiluted at 2-8°C. <b>DO NOT FREEZE!</b> This product is photosensitive and should be protected from light.
<b>Stability:</b>	Shelf life: one year from despatch.

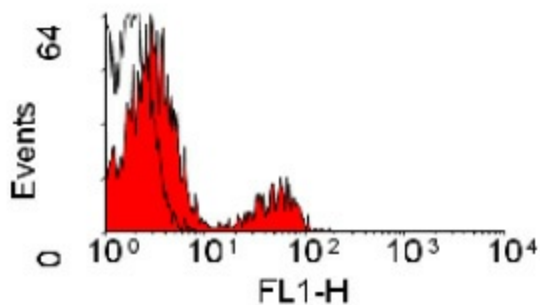


[View online »](#)

**Background:** The FMC7 antigen is expressed by peripheral B lymphocytes, and has been used widely in the study of B cell malignancy. FMC7 has been used extensively to differentiate various types of B cell malignancy. The nature of the FMC7 antigen has remained poorly defined following its first description in 1981.

**Synonyms:** B-cell marker, B cells

**Product images:**



Staining of human peripheral blood lymphocytes with Mouse Anti Human B-Cells (FMC7): FITC (SM1303F).