

## Product datasheet for **SM1225P**

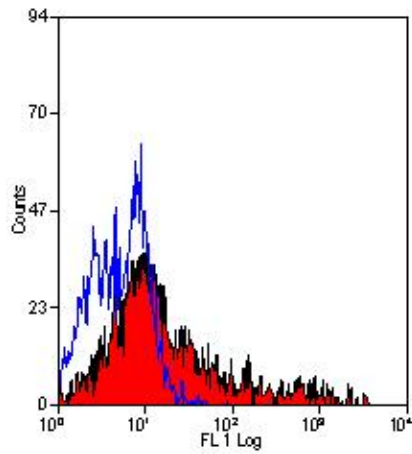
### HLA Class II DP, DR, DQ Mouse Monoclonal Antibody [Clone ID: WR18]

#### Product data:

<b>Product Type:</b>	Primary Antibodies
<b>Clone Name:</b>	WR18
<b>Applications:</b>	FC, IHC
<b>Recommended Dilution:</b>	Flow Cytometry (1:50 - 1:200, use 10 µl of diluted antibody to label 1x10e6 cells in 100 µl). Immunohistochemistry on frozen and paraffin embedded sections (heat induced antigen retrieval using sodium citrate buffer pH 6.0 is recommended for this purpose). Recommended positive control: Tonsil.
<b>Reactivity:</b>	Human
<b>Host:</b>	Mouse
<b>Isotype:</b>	IgG2a
<b>Clonality:</b>	Monoclonal
<b>Immunogen:</b>	Human HLA Class II (DP, DQ, DR)
<b>Specificity:</b>	WR18 is specific for the human HLA Class II beta chains of human histocompatibility antigen Mw 28 kD. Reacts with a monomorphic determinant common to each beta chain type. Expressed on human B lymphocytes, monocytes and activated T lymphocytes.
<b>Formulation:</b>	PBS containing 0.09 % sodium azide as preservative State: Purified
<b>Concentration:</b>	lot specific
<b>Purification:</b>	Affinity purified on Protein G
<b>Conjugation:</b>	Unconjugated
<b>Storage:</b>	Store the antibody at 2-8°C or at -20°C for longer. Avoid repeated freezing and thawing.
<b>Stability:</b>	Shelf life: One year from despatch.
<b>Synonyms:</b>	MHC class II antigen DP, DR, DQ, HLA class II histocompatibility antigen DP, DR, DQ



[View online »](#)

**Product images:**

Staining of human peripheral blood lymphocytes with mouse anti human HLA CLASS II DP DQ DR antibody.