

Product datasheet for **SM1222P**

HLA Class I ABC Mouse Monoclonal Antibody [Clone ID: W6/32]

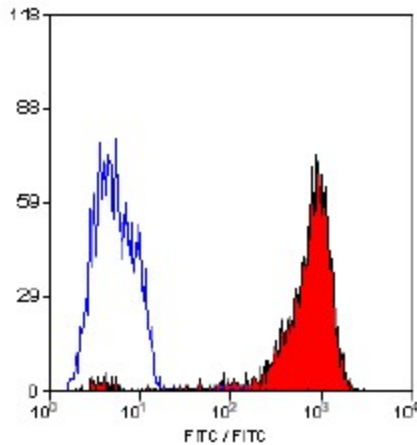
Product data:

Product Type:	Primary Antibodies
Clone Name:	W6/32
Applications:	ELISA, FC, IF, IHC, IP
Recommended Dilution:	ELISA. Immunoprecipitation. Flow Cytometry: Use 10 µl of 1/50-1/100 diluted antibody to label 1x10 ⁶ cells or 100 µl whole blood. This product is routinely tested in flow cytometry on human peripheral blood lymphocytes. Immunohistochemistry on Frozen Sections: The epitope recognised by this antibody is reported to be sensitive to formaldehyde fixation and tissue processing. Acetone fixation for frozen sections is recommended. Positive Control: Tonsil Tissue. Does not work on Paraffin Sections.
Reactivity:	Bovine, Feline, Human, Monkey, Primate
Host:	Mouse
Isotype:	IgG2a
Clonality:	Monoclonal
Immunogen:	Purified human tonsil lymphocyte membranes
Specificity:	Antibody SM1222P recognises an antigenic determinant shared among products of the HLA A, B and C loci. Clone W6/32 recognises a conformational epitope, reacting with HLA class I alpha-3 and alpha-2 domains (See Ishitani, A. et al. for details). MHC class I glycoproteins are found on the surface of almost all nucleated somatic cells. Negative Species: Goat, Dog, Guinea Pig, Rabbit, Mouse, Chicken, Amphibia.
Formulation:	PBS, pH 7.4 State: Purified State: Liquid purified IgG fraction from Tissue Culture Supernatant Preservative: 0.09% Sodium Azide
Concentration:	lot specific
Purification:	Affinity Chromatography on Protein G



[View online »](#)

Conjugation:	Unconjugated
Storage:	Store undiluted at 2-8°C for one month or (in aliquots) at -20°C for longer. Avoid repeated freezing and thawing.
Stability:	Shelf life: one year from despatch.
Background:	The major histocompatibility complex (MHC) is a cluster of genes that are important in the immune response to infections. In humans, this complex is referred to as the human leukocyte antigen (HLA) region. There are 3 major MHC class I proteins encoded by the HLA which are HLA A, HLA B and HLA C. These proteins are found on the surface of almost all nucleated somatic cells.
Synonyms:	MHC class I ABC, HLA Class 2 ABC

Product images:

Staining of Human peripheral blood lymphocytes with Mouse anti Human HLA ABC Antibody Cat.-No SM1222P (Clone W6/32)