

Product datasheet for **SM1222LE**

HLA Class I ABC Mouse Monoclonal Antibody [Clone ID: W6/32]

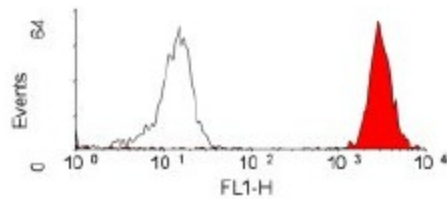
Product data:

Product Type:	Primary Antibodies
Clone Name:	W6/32
Applications:	ELISA, FC, FN, IF, IHC, IP
Recommended Dilution:	ELISA. Immunoprecipitation (Ref 1). Functional Assays. Immunofluorescence. Flow Cytometry: Use 10 µl of 1/50-1/100 diluted antibody to label 10 ⁶ cells in 100 µl. This product is routinely tested in Flow Cytometry on Human peripheral blood lymphocytes. Immunohistochemistry on Frozen Sections (See Ref 6). <i>Positive Control Tissue:</i> Tonsil. Not suitable for Immunohistochemistry on Paraffin Sections.
Reactivity:	Bovine, Chimpanzee, Feline, Human, Macaque, Monkey, Primate, Baboon
Host:	Mouse
Isotype:	IgG2a
Clonality:	Monoclonal
Immunogen:	Purified Human tonsil lymphocyte membranes. Spleen cells from immunised BALB/c mice were fused with cells of the mouse NS1/1-Ag4.1 myeloma cell line
Specificity:	SM1222LE recognises an antigenic determinant shared among products of the HLA A, B and C loci. Clone W6/32 recognises a conformational epitope, reacting with HLA class I alpha-3 and alpha-2 domains (Ref 7). MHC class I glycoproteins are found on the surface of almost all nucleated somatic cells.
Formulation:	PBS without preservatives or stabilizers. Endotoxin level: Less than 0.01 EU/µg State: Low Endotoxin State: Liquid purified IgG fraction
Concentration:	lot specific
Purification:	Affinity Chromatography on Protein G



[View online »](#)

Conjugation:	Unconjugated
Storage:	Store the antibody undiluted at -20°C only. Avoid repeated freezing and thawing.
Stability:	Shelf life: one year from despatch
Synonyms:	MHC class I ABC, HLA Class 2 ABC

Product images:

Staining of peripheral blood lymphocytes with anti-HLA-ABC - Low Endotoxin (SM1222LE)