

Product datasheet for **SM1222F**

HLA Class I ABC Mouse Monoclonal Antibody [Clone ID: W6/32]

Product data:

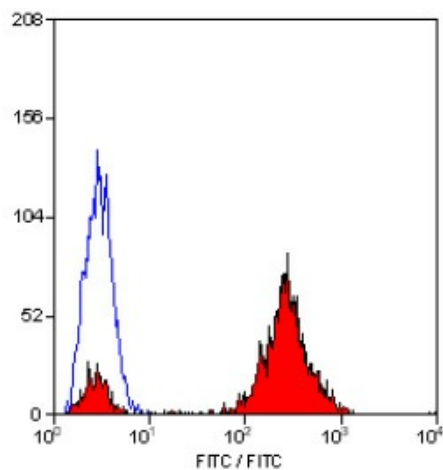
Product Type:	Primary Antibodies
Clone Name:	W6/32
Applications:	FC
Recommended Dilution:	Flow Cytometry: Use 10 µl of neat antibody to label 10 ⁶ cells in 100 µl. This antibody is routinely tested in Flow Cytometry on Human peripheral blood lymphocytes.
Reactivity:	Bovine, Feline, Human, Monkey, Primate
Host:	Mouse
Isotype:	IgG2a
Clonality:	Monoclonal
Immunogen:	Membrane of human tonsil cells. Spleen cells from immunised BALB/c mice were fused with cells of the mouse NSI/I-Ag4.1 myeloma cell line.
Specificity:	This antibody recognises an antigenic determinant shared among products of the HLA A, B and C loci. Clone W6/32 recognises a conformational epitope, reacting with HLA class I alpha3 and alpha2 domains. MHC class I glycoproteins are found on the surface of almost all nucleated somatic cells. Does not react with Mouse, Chicken, Rabbit, Dog, Goat and Guinea Pig.
Formulation:	PBS, pH 7.4 Label: FITC State: Liquid purified IgG fraction Stabilizer: 1% BSA Preservative: 0.09% Sodium Azide
Concentration:	lot specific
Purification:	Affinity Chromatography on Protein G
Conjugation:	FITC
Storage:	Store the antibody undiluted at 2-8°C for one month or (in aliquots) at -20°C for longer. Avoid repeated freezing and thawing. This product is photosensitive and should be protected from light.
Stability:	Shelf life: one year from despatch.



[View online »](#)

Synonyms: MHC class I ABC, HLA Class 2 ABC

Product images:



Staining of human peripheral blood lymphocytes with MOUSE ANTI HUMAN HLA ABC:FITC (SM1222F).